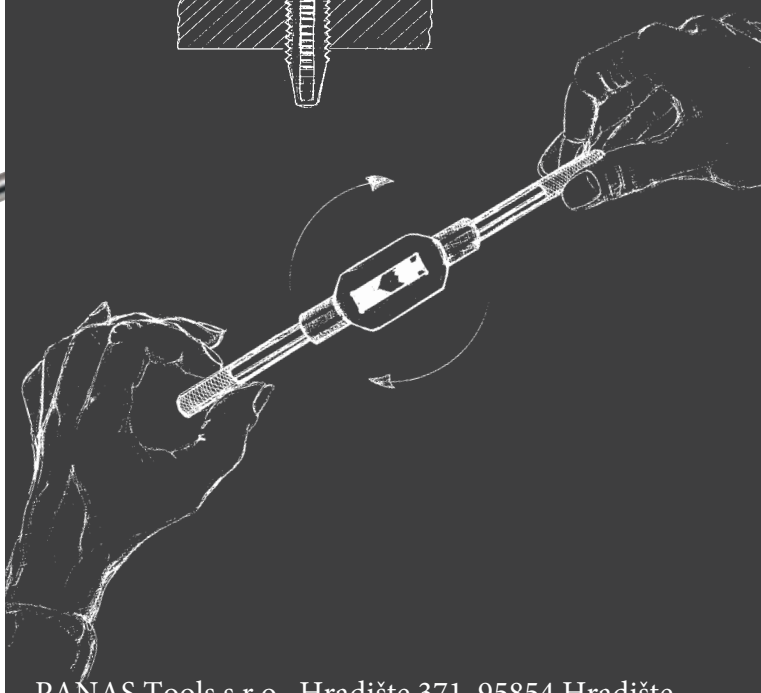
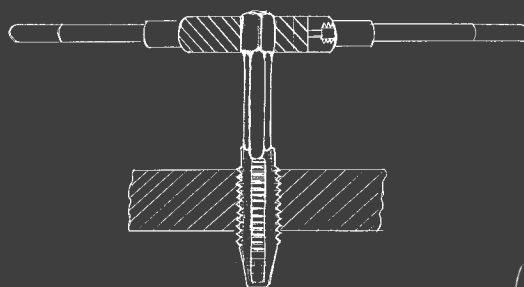
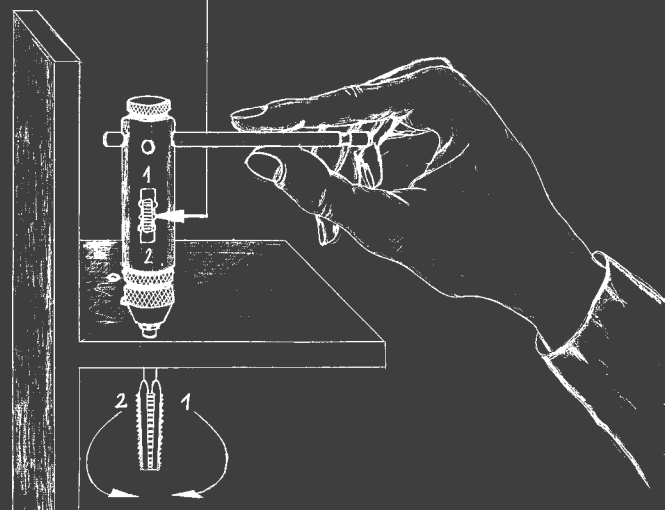
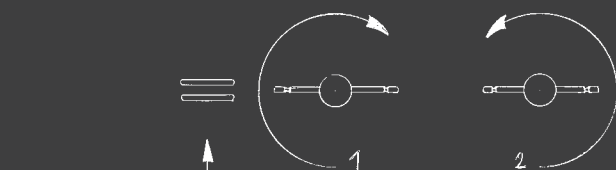
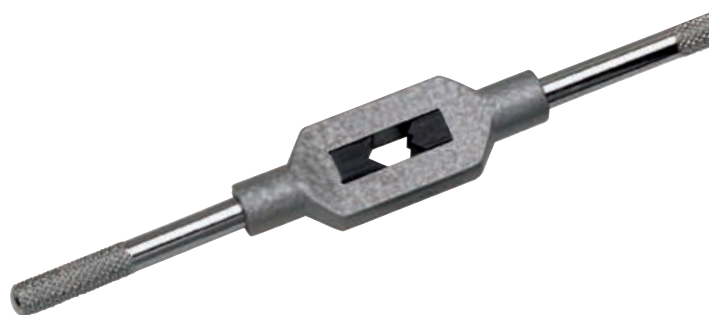


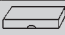
VRATIDLÁ



Vratidlo s račnou

pre pravý aj ľavý chod



No.	for Taps	Square mm	Length mm	Weight kg		Art.-No.
1	M 3-10 1/8-3/8	2.4-5.5	85	0,165	10	10001
2	M 5-12 7/32-1/2	4.5-8.0	100	0,310	10	10002
10	M 3-10 1/8-3/8	2.4-5.5	250	0,250	10	10010
20	M 5-12 7/32-1/2	4.5-8.0	300	0,440	10	10020

Jaws and Spring for No. 1 und 10

10

10091

Jaws and Spring for No. 2 und 20

10

10092

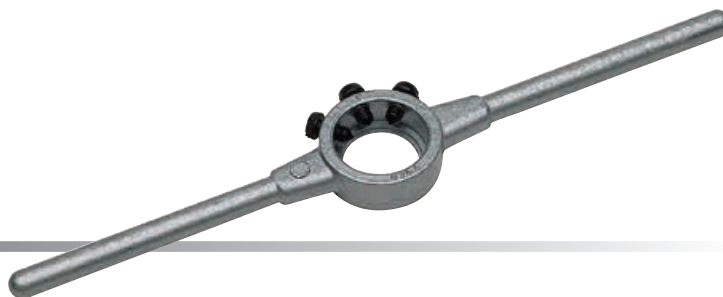
Vratidlo na kruhové čeluste


Die Stocks

Inch - with 3 screws

Portafiliera misura

pollice con 3 vite



Ø	mm	inch/pollice	Length mm	Weight kg		Art.-No.
13/16"	20.6 x 6.35	13/16 x 1/4	200	0,060	5	15520
1"	25.4 x 9.5	1" x 3/8	224	0,100	5	15525
1.5/16"	33.4 x 11.1	1.5/16 x 7/16	270	0,180	5	15533
1.1/2"	38.1 x 12.7	1.1/2 x 1/2	315	0,320	5	15538
2"	50.8 x 15.9	2" x 5/8	560	0,900	1	15550
2.1/4"	57.1 x 17.5	2.1/4 x 11/16	560	0,900	1	15557
2.1/2"	63.5 x 19.0	2.1/2 x 3/4	630	1,400	1	15563
3"	76.2 x 22.2	3" x 7/8	900	2,200	1	15576
3.1/2"	88.9 x 25.4	3.1/2" x 1"	900	3,300	1	15588
4"	101.6 x 25.4	4" x 1"	1000	3,600	1	15599

Vratidlo na kruhové čeluste DIN 225, zinok

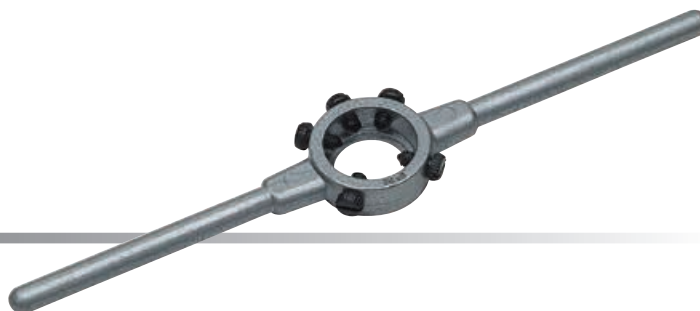



Die Stocks

DIN 225 (DIN EN 22568), Zinc die cast

Portafiliera

DIN 225 (DIN EN 22568), pressogetto di zinco



Ø x mm	for round Dies DIN 223 (DIN EN 22568)		Length mm	Weight kg		Art.-No.	
16 x 5	M	1-2.6	BSW 1/16-3/32	160	0,050	5	15001
20 x 5	M	3-4	BSW 1/8-5/32	200	0,065	5	15002
20 x 7	M	4.5-6	BSW 3/16-1/4	200	0,065	5	15003
25 x 9	M	7-9	BSW 5/16	224	0,105	5	15004
30 x 11	M	10-11	BSW 3/8-7/16	280	0,190	5	15005
38 x 10	Mf	12-15	G 1/4	315	0,340	5	15006
38 x 14	M	12-14	BSW 1/2-9/16	315	0,340	5	15007
45 x 14	Mf	16-20	G 3/8-1/2	450	0,650	1	15008
45 x 18	M	16-20	BSW 5/8-13/16	450	0,650	1	15009
55 x 16	Mf	22-26	G 5/8-3/4	560	0,900	1	15010
55 x 22	M	22-24	BSW 7/8-1"	560	0,900	1	15011
65 x 18	Mf	27-36	G 7/8-1"	630	1,400	1	15012
65 x 25	M	27-36	BSW 1.1/8-1.3/8	630	1,400	1	15013

Vratidlo na kruhové čeluste DIN 225, ocel'

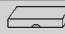
Die Stocks

DIN 225 (DIN EN 22568), STEEL

Portafiliera

DIN 225 (DIN EN 22568), esecuzione acciaio



Ø x mm	for round Dies DIN 223 (DIN EN 22568)		Length mm	Weight kg		Art.-No.	
45 x 18	M	16-20	BSW 5/8-13/16	450	0,650	1	15209
55 x 22	M	22-24	BSW 7/8-1"	560	0,900	1	15211
65 x 25	M	27-36	BSW 1.1/8-1.3/8	630	1,400	1	15213
75 x 20	Mf	38-42	G 1.1/8-1.1/4	800	2,250	1	15214
75 x 30	M	38-42	BSW 1.1/2-1.5/8	800	2,100	1	15215
90 x 22	Mf	45-52	G 1.3/8-1.5/8	900	3,200	1	15216
90 x 36	M	45-52	BSW 1.3/4-2"	900	3,000	1	15217
105 x 22	Mf	54-63	G 1.3/4-2"	975	3,500	1	15218
105 x 36	M	54-63	BSW 2.1/4"-2.1/2"	975	3,500	1	15219
120 x 22	Mf	64-71	G 2.1/4-2.3/4	956	3,170	1	15220
120 x 36	M	64-71	BSW 2.3/4"	956	3,910	1	15221
130 x 25			G 3"	966	3,505	1	15222
130 x 36				966	4,025	1	15223
140 x 22				976	3,620	1	15224
150 x 25			G 3.1/2"	986	3,950	1	15226
160 x 25			G 4"	996	4,115	1	15228

Tap Extensions

DIN 377, Squares according to DIN 10

Prolunghe per maschi

DIN 377, Quadro in base a DIN 10



Square mm	L1	for DIN 352	Art.-No.
2.1	60	M 1-2.6	14521
2.4	70		14524
2.7	80	M 3	14527
3.0	90	M 3.5	14530
3.4	95	M 4	14534
3.8	100		14538
4.3	105		14543
4.9	110	M 4.5-8	14549
5.5	115	M 9-10	14555
6.2	120	M 11	14562
7.0	125	M 12	14570
8.0	125		14580
9.0	130	M 14-16	14590
10.0	140		14610
11.0	150	M 18	14611
12.0	155	M 20	14612
13.0	165		14613
14.5	175	M 22-24	14614
16.0	180	M 27	14616
18.0	200	M 30	14618
20.0	220	M 33	14620
22.0	220	M 36	14622
24.0	235	M 39-42	14624
26.0	250		14626
29.0	265	M 45-48	14629
32.0	285	M 52	14632