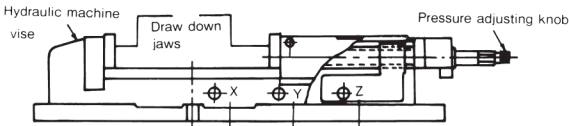


### Order No. & Dimensions

Unit:mm

ORDER NO.	A	B	C	D	E	F	G	H	Max. Clamp Force	G.W.(kg)	Meas CFT	CODE NO.
VH-4	100	36	525	430	160	94	60	100	2500kgs	(C)28	0.8	1002-001
VH-5	127	46	670	540	185	118	72	117	4500kgs	(C)47	1.5	1002-002
VH-6	150	51	800	620	240	133	82	125	4500kgs	(C)65	2.2	1002-003
VH-8	200	65	800	710	280	158	100	180	6500kgs	(W)110	3.6	1002-004

### CLAMPING CAPACITY (3 STEPS CLAMPING POSITION FIG)

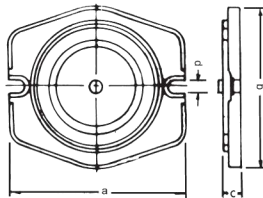


1. Ruggedly constructed for milling, drilling, shaping, grinding and many other machine shop applications.
2. Body is made of high quality ductile cast iron, resists deflection or bending.
3. Sliding bed ways flame hardened and ground.
4. Concealed spindle for protection against chips and dirt.
5. Hydra-booster system for maximum clamping pressure with minimum force.
6. Quick of clamping & locking and easy of operation.
7. Accuracy within 0.02mm.
8. Furnished with or without swivel base.
9. Hydra-booster system is guaranteed for using 2 years limited.
10. The hydraulic oil number is 68#.

### CLAMPING CAPACITY Unit:mm

ORDER NO.	X	Y	Z
VH-4, VHT-4	0-60	57-115	110-170
VH-5	0-80	78-115	140-208
VH-6, VHT-6	0-100	98-200	195-300
VH-8	0-100	98-200	195-300

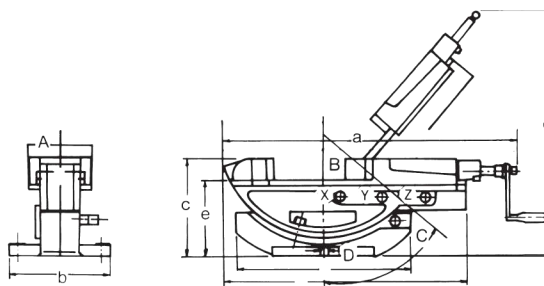
### Swivel base



Unit:mm

ORDER NO.	a	b	c	d	G.W. (kg)	CODE NO.
HS-4	280	210	28	16	4	1002-010
HS-5	297	267	33	16	7	1002-011
HS-6	335	310	36	19	10	1002-012
HS-8	373	355	41	19	16	1002-013

# SKLÁPACIE HYDRAULICKÉ STROJNÉ ZVERÁKY



Unit:mm

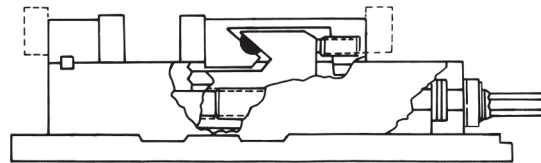
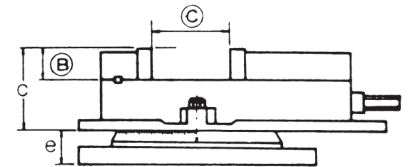
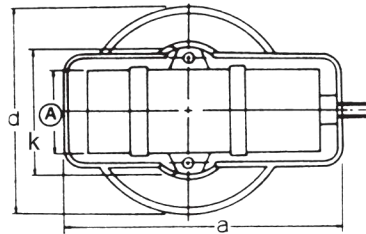
ORDER NO.	A	B	C	D	a	b	c	d	e	Max. Clamp Force	G.W.(kg)	Meas CFT	CODE NO.
VHT-4	104	36	50°	14	523	162	177	MAX. 450	141	2500kgs	(W)33	1.2	1002-020
VHT-6	154	51	50°	14	801	242	237	MAX. 580	186	4400kgs	(W)81	4.4	1002-021

1. The same as characters of VH type. Swivel base same as VH type.
2. Tilting seat set by two locking screws, works in high stability.
3. Angle setting ranges from 0°~50°. Tilting degrees graduated for easy reading. Swivel base graduated to 360° and fixable in any position.
4. THE (3 STEPS CLAMPING POSITION) SAME AS VH TYPE.
5. Accuracy within 0.02mm
6. Hydra-booster system is guaranteed for using 2 years limited.

# Ang-Fixed Milling Vise



**VD-675, VD-810 is NEW**  
**VD-675 6" opened 7 1/2"**  
**VD-810 8" opened 10"**



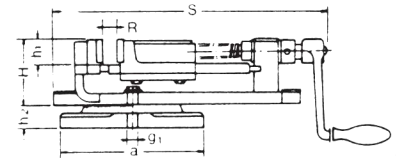
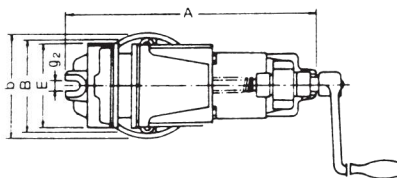
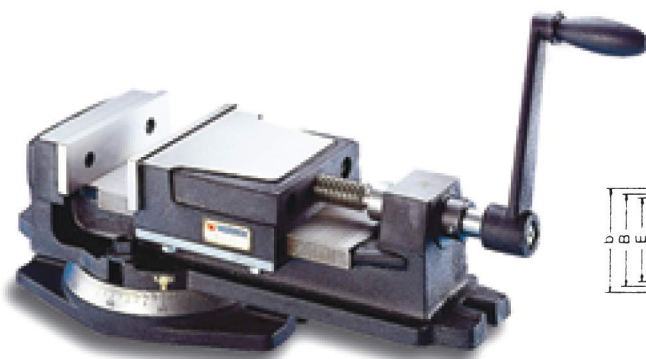
1. Use highest quality ductile Iron 80000 PSI for minimum bending.
2. The enclosed lead screw and sliding surface are hardened and grounded.
3. Highest clamping power. It's very accurate and durable.
4. This Vise is so designed that the horizontal force generated by tightening the handle pushes the semi-sphere within the movable jaw and thus thrusts the movable jaw downward.  
Therefore, the workpiece does not move up, even if it is held at the top of the jaw plates.
5. Four setting positions of the jaw plates are available, widening the jaw plates opening.
6. The new VD675, VD810 have two major improvements: a wide opening jaw and a new stationary jaw that features an integral key larger fasteners which reduce deflection by 50%.

## Order No. & Dimensions

Unit:mm/inches

ORDER NO.	A	B	C	a	k	c	d	e	f	Gross weight kg		Meas. CFT	CODE NO.
										plain	with swivel base		
VA-4	102 4 1/64	36 1 27/64	103 4 1/16	325 12 13/16	165 6 1/2	96 3 25/32	243 9 9/16	31 1 7/32	6 1/4	16 36	(C) 20	0.5	1002-030
VA-5	131 5 5/32	36 1 13/32	110 4 21/64	357 14 1/16	193 7 5/8	101 3 31/32	278 11	32 1 3/4	7 5/16	25 55	(C) 30	0.9	1002-031
VA-6	152 6	46 2	142 5 9/32	418 16 7/16	209 8 1/4	119 4 11/16	328 12 29/32	39 1 17/32	9 3/8	36 80	(C) 42	1.5	1002-032
VA-8	200 7 7/8	62 2 7/16	197 7 3/4	548 21 9/16	295 11 5/8	147 5 13/16	416 16 3/8	45 1 25/32	11 7/16	70 155	(W) 80	2.7	1020-033
VD675	152 6	38 1 1/2	190 7 1/2	552 21 3/4	295 11 5/8	134 5 5/16	381 15	47 1 7/8	11 7/16	37 82	(C) 43	1.5	1002-034
VD810	203 8	50 2	250 10"	552 21 3/4	295 11 5/8	134 5 5/16	381 15	47 1 7/8	11 7/16	70 155	(W) 102	2.7	1002-035

# K-Type Milling Vise



1. It's a practical piece of equipment with excellent precision and a high quality finished.
2. Body, movable jaw and swivel base made of close-grained high tensile iron castings. Built for heavy duty machining and retained accuracy.
3. Jaw plates of hardened and ground tool steel.
4. It's the most suitable for the Milling, Grinding and Drilling.

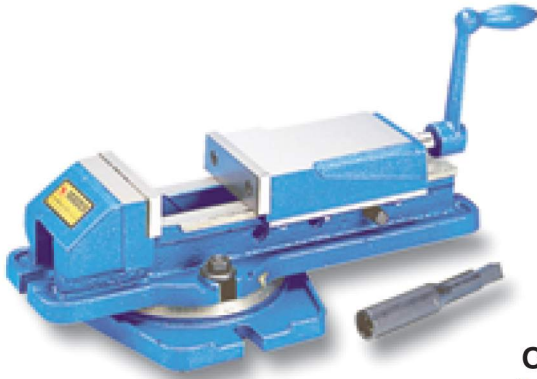
## Order No. & Dimensions

Unit:mm

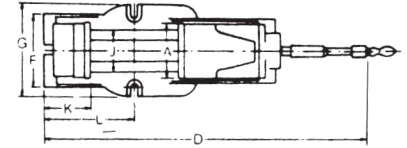
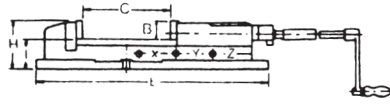
ORDER NO.	E	A	B	H	R	S	a	b	h1	h2	g1	g2	G.W(kg)	Meas. CFT	CODE NO.
VK-4	100	267	106	75	62	295	160	114	30	25	13	13	(C)10	0.2	1002-040
VK-5	125	345	128	98	85	370	208	150	37	30	12	12	(C)17	0.5	1002-041
VK-6	150	421	160	105	114	462	245	175	40	40	16	16	(C)27	1.1	1002-042
VK-8	200	576	215	144	150	620	340	230	58	45	18	18	(W)57	1.5	1002-043

# Super Open Vise

MECHANICAL TYPE



EXCEPT THE HYDRAULIC SYSTEM,  
THE FEATURE IS SAME AS VH-TYPE



VJ-400 JAW OPENED 170mm  
VJ-500 JAW OPENED 220mm  
VJ-600 JAW OPENED 300mm

## Order No.& Dimensions

Unit:mm

ORDER NO.	A	B	C	D	E	F	G	H	I	J	K	L	G.W. (kg)	Meas CFT	CODE NO.
VJ-400	100	36	170	525	430	130	160	94	60	78	100	155	(C) 21	0.8	1002-050
VJ-500	127	46	220	670	540	165	185	118	72	97	117	185	(C) 32	1.5	1002-051
VJ-600	150	51	300	800	620	200	240	133	82	116	125	247	(C) 45	2.2	1002-052

# 2-Way Angle Milling Vise

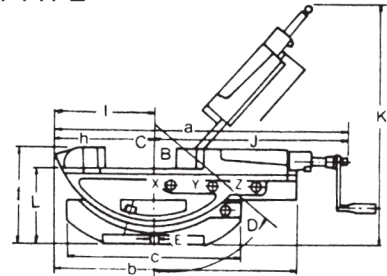
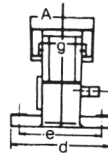
EXCEPT THE HYDRAULIC SYSTEM,  
THE FEATURE IS SAME AS VHT-TYPE

VWT-4 JAW OPENED 100mm  
VWT-6 JAW OPENED 300mm



VWT-4

VWT-6



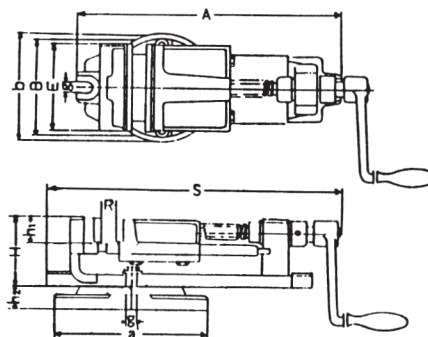
## Order No.& Dimensions

Unit:mm

ORDER NO.	A	B	C	D	E	a	b	c	f	h	I	L	G.W. (kg)	Meas CFT	CODE NO.
VWT-4	104	36	100	50	14	523	404	325	177	90	184	141	(C) 25	1.2	1002-060
VWT-6	154	51	300	50	16	801	585	415	237	121	241	186	(W) 80	4.4	1002-061

# High Jaw Machine Vise

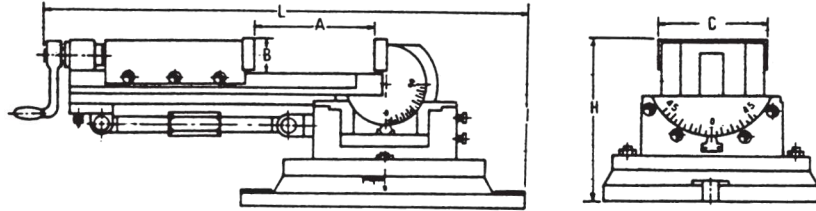
JAW HEIGHT 75mm  
JAW OPENED 150mm



Unit:mm

ORDER NO.	E	A	B	H	R	S	A1	D	h1	h2	G	G1	WEIGHT	CODE NO.
V-606V	150	580	160	145	150	620	245	175	75	40	16	16	43kgs	1002-070

# 3-Way Angle Milling Vise



Order No. & Dimensions

Unit:mm

ORDER NO.	Jaw			H	L	Height at vertical position	Gross Weight kg	Meas CFT	CODE NO.
	Width	A	B						
VW-3	80	90	30	144	400	385	(C)21	0.7	1002-080
VW-4	106	105	38	172	460	470	(C)33	1.2	1002-081
VW-5	132	140	40	205	625	590	(W)53	1.6	1002-082

1. Angles can be set in 3 dimensions. Swivels 360° around base. The vise can be elevated through 90° from the horizontal to vertical. And also can be tilted on its lower angle base up to 45° in both right and left.
2. Tilting of any angle all keep the workpiece steady, smooth.
3. Particularly the clamping part of screw is strengthened by a bush made of gumetal.

# 2-Way Machine Vise



- heavy cast iron structure
- scales in both axis
- 360° swivel around Z-axis
- 90° vertical and horizontal swivel

ORDER NO.	VWT-5
jaw width	125
jaw height	46
max. opening	100
alignment slot	16
height	160mm
L x W x H(OVERALL)	410x315x160
WEIGHT	35kg
PACKING	420x290x210
CODE NO.	1002-090

# Heavy Duty Machine Vise

ENGLAND TYPE



NEW

- Vice body made from high grade iron for rigidity.
- Low overall height.
- Moving jaw runs in long prismatic slides with provision for wear adjustment.
- Hardened and ground steel jaw plates supplied as standard.
- Totally enclosed acme screw with three point location operating in a phosphor bronze nut.

ORDER NO.	VWA-160
Width of jaws	150
Max jaw opening	165
Depth of jaws	50
Overall size of swivel base	530x215
Overall height	100
Net weight (kg)	35
Packing(mm)	560x205x165
CODE NO.	1002-100

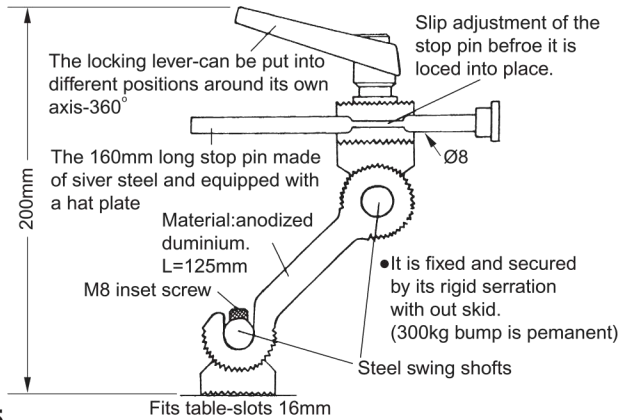
# U/N Work Stopper



**NON TEETH TYPE**  
**ORDER NO. VWS-123**  
**CODE NO. 1002-105**  
**WEIGHT: 1kg**



**ORDER NO. VWS-125**  
**CODE NO. 1002-106**  
**WEIGHT: 1kg**



# Prisma Jaw

## PRISMA JAW



### ORDER NO.

VWS-VK-4.5.6.8 VWS-VW-3.4.5  
 VWS-VA-4.5.6.8 VWS-VMC-4.6  
 VWS-VH-4.5.6.8 VWS-VQS-3, 4, 5  
 VWS-VJ-400.500.600

ORDER NO.	WEIGHT	CODE NO.
VWS-VK-4	0.22kg	1002-110
VWS-VK-5	0.31kg	1002-111
VWS-VK-6	0.41kg	1002-112
VWS-VK-8	1.2kg	1002-113

ORDER NO.	WEIGHT	CODE NO.
VWS-VW-3	0.21kg	1002-120
VWS-VW-4	0.31kg	1002-121
VWS-VW-5	4.1kg	1002-122

ORDER NO.	WEIGHT	CODE NO.
VWS-VA-4	0.4kg	1002-130
VWS-VA-5	0.51kg	1002-131
VWS-VA-6	0.96kg	1002-132
VWS-VA-8	1.76kg	1002-133

ORDER NO.	WEIGHT	CODE NO.
VWS-VMC-4	4.1kg	1002-140
VWS-VMC-6	0.96kg	1002-141

ORDER NO.	WEIGHT	CODE NO.
VWS-VJ-400	0.3kg	1002-163
VWS-VJ-500	0.51kg	1002-164
VWS-VJ-600	0.94kg	1002-165

ORDER NO.	WEIGHT	CODE NO.
VWS-VH-4	0.41kg	1002-150
VWS-VH-5	0.71kg	1002-151
VWS-VH-6	0.91kg	1002-152
VWS-VH-8	1.81kg	1002-153

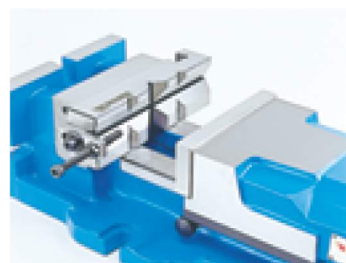
ORDER NO.	CODE NO.
VWS-VQS-3	1002-160
VWS-VQS-4	1002-161
VWS-VQS-5	1002-162

# Universal Vise Jaws With Work Stopper



### ORDER NO. VWSJ-4.5.6.8

1. Can be fixed on any vise jaw by the two screws on the side.
2. One jaw in multiple-function features.
3. V-type jaw can fix workpiece at horizontal and vertical position.
4. Can be performed as work stopper.

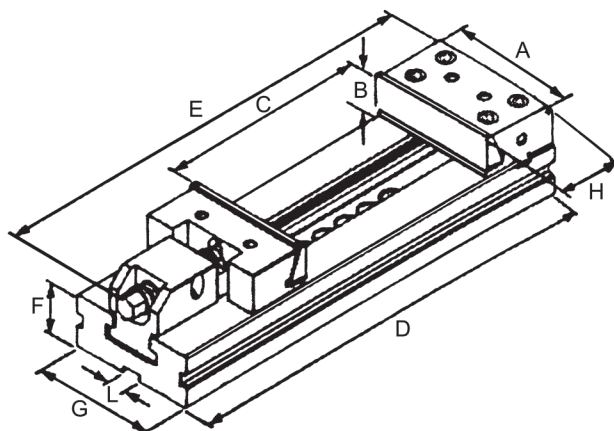
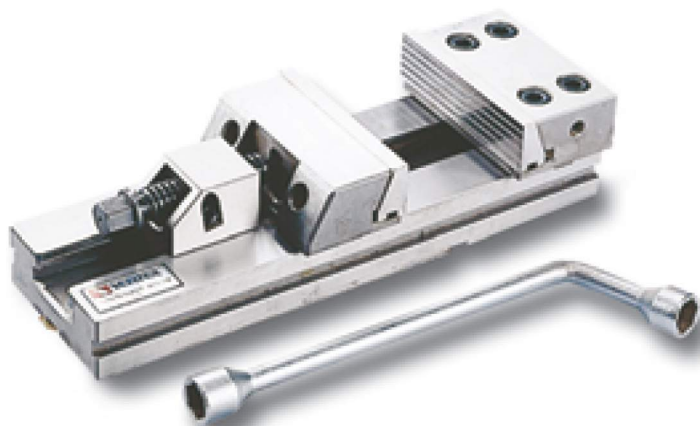


### ORDER NO.I.D. Chart:

VWSJ-□—— VISE JAW SIZE (Unit:inch)  
 └—— SYSTEM NO.

ORDER NO.	WEIGHT	CODE NO.
VWSJ-4	1.5kg	1002-170
VWSJ-5	1.7kg	1002-171
VWSJ-6	2kg	1002-172
VWSJ-8	4kg	1002-173

# Modular Precision Machine Vises



## FEATURES

- High Accuracy
- Unlimited Clamping Range
- High Quality Alloy Steel
- High Clamping Pressure
- EACH ONE IS SAME AS HEIGHT.
- CAN BE USED MULTIPLE STYLE.
- No Length of Height Limitations
- No Jaw Lift
- Low Profile
- All Vises are Matched
- Swivel base be optional

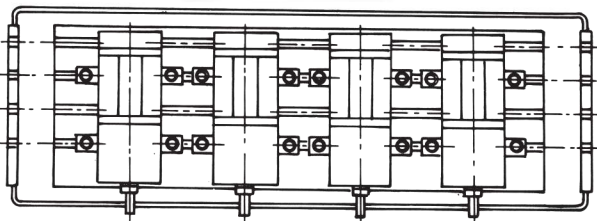
**MODULAR VISES** are manufactured under rigid quality control. Only the most suitable materials are used, and the accuracy of even the smallest components is assured. As a result of the high standard construction **MODULAR VISES** can be depended upon to maintain their accuracy under the most severe operating conditions. The modular design and the concept of interchangeability makes possible a wide variety of set up combinations.

ORDER NO.	VMP-4	VMP-5	VMP-6	VMP-7A	VMP-7B	VMP-7C	VMP-8B	VMP-8C
<b>A</b>	100	125	150	175	175	175	200	200
<b>B</b>	30	40	50	60	60	60	65	65
<b>C</b>	100	150	200	200	300	400	300	400
<b>D</b>	275	350	426	455	555	655	595	695
<b>E</b>	325	146	530	620	620	620	718	718
<b>F</b>	35	40	50	58	58	58	70	70
<b>G</b>	75	96	125	145	145	145	170	170
<b>H</b>	78	78	90	97	97	97	114	114
<b>I</b>	16	16	16	16	16	16	16	16
<b>KG</b>	7	18	29	38	43	48	69	74
<b>CODE NO.</b>	1002-190	1002-191	1002-192	1002-193	1002-194	1002-195	1002-197	1002-198

# Lock-Fixed II Precision Machine Vise



Performed sided vertically.



Performed jointly.

## ORDER NO.

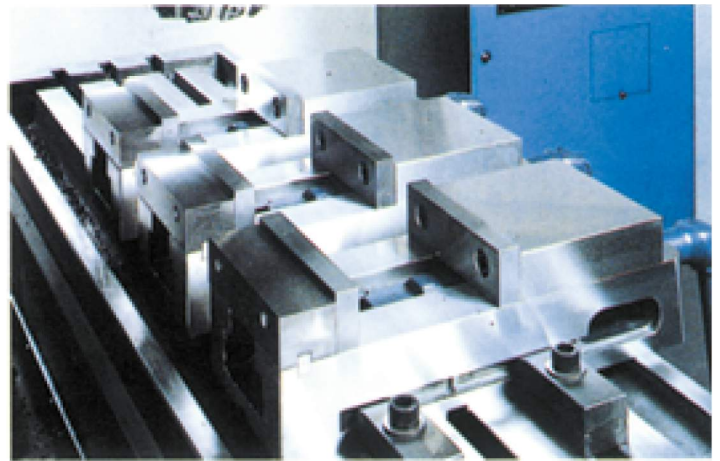
VMC-4

VMC-6

A. With the ability of lock-fixed III 2,3,4,5,.

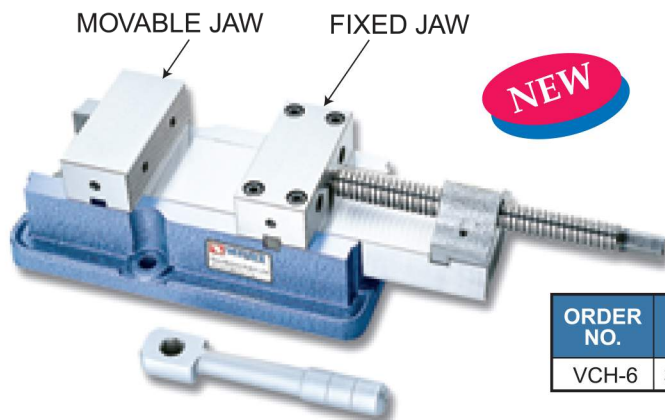
B. Use the semi-sphere segment principle.

C. When operate several vises (in a row) put on one machine bed, the using situation is showed as following:



ORDER NO.	JAW WIDTH	LENGTH	HEIGHT	JAW HEIGHT	JAW OPENING	KEY WAY	MEAS CUFT	WEIGHT (kg)	CODE NO.
VMC-4	101.6	343	89	31.5	100	14	0.4	14	1002-185
VMC-6	152.5	435	110	44	142	16	1.1	31	1002-186

# Heavy Duty Milling Vise



## FEATURES

A. Stationary front jaw

B. The back jaw moves along with the slide reducing the tendency towards deflection preventing the workpieces from tilting.

C. Jaw and body are steel construction

D. Hardened & ground on all sliding and contacting surface

E. Ideal for CNC application.

ORDER NO.	A	B	C	D	E	F	G	H	I	J	G.W (kg)	CODE NO.
VCH-6	360	630	48	127	210	18	145	160	198	19	40	1002-199

