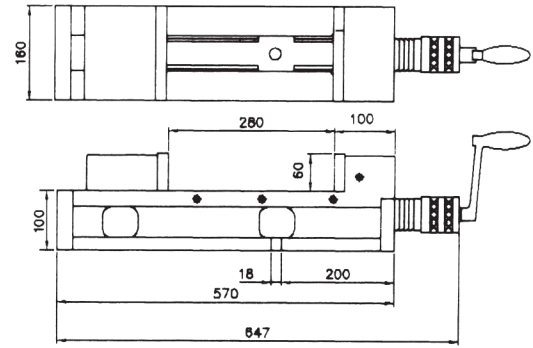
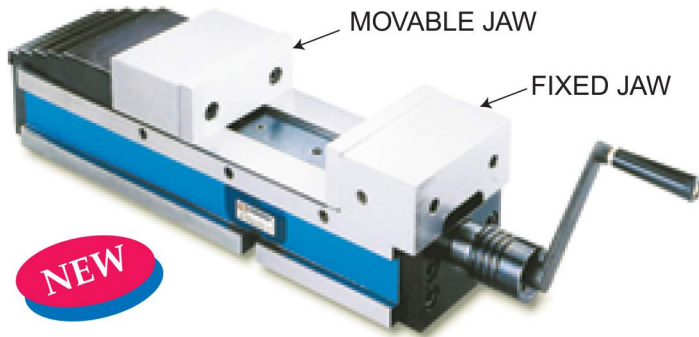


Convenience Hydraulic Machine Vise

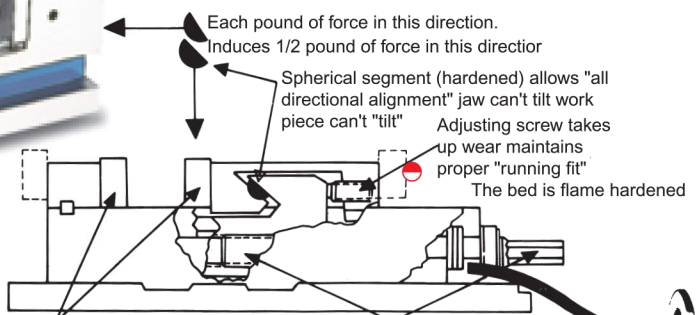
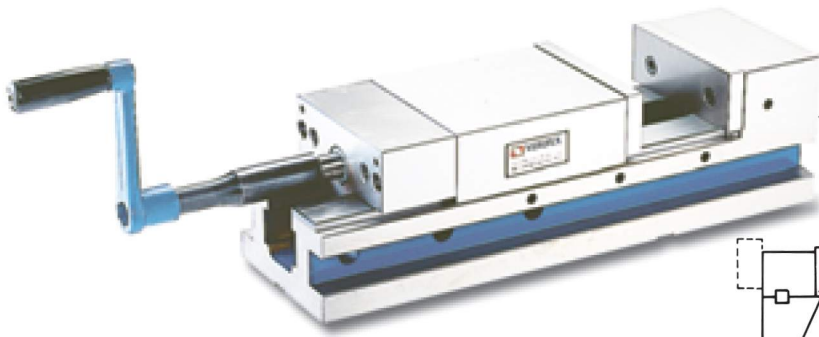


- Movable jaw located at outer end and "align surface" for workpiece is in front of operator. It is convenient for loading or unloading workpiece on such design of hydraulic vise.
- The overall length of this vise is shorter than other similar vises, but keep the same jaw opening. Save space on work table.
- Semi-spherical segment eliminates jaw lifting and workpiece tilting.
- Vise bed flame hardened to HRC 45 up is capable to obtain low weariness and last the high accuracy for long.
- Chip covers is applied on this vise to prevent from chips falling to Leadscrew and inside of vise.

ORDER NO.	VCH-160
WIDTH OF JAW	160mm
JAW OPENING	280mm
DEPTH OF JAWS	60mm
OVERALL LENGTH	647mm
CLAMPING FORCE	4500kgs
NET WEIGHT (KG)	60kgs
PACKING(MM)	700X185X180
CODE NO.	1002-200

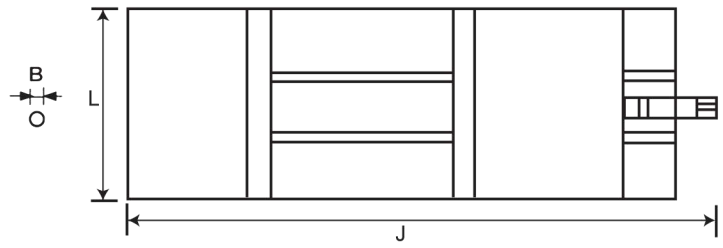
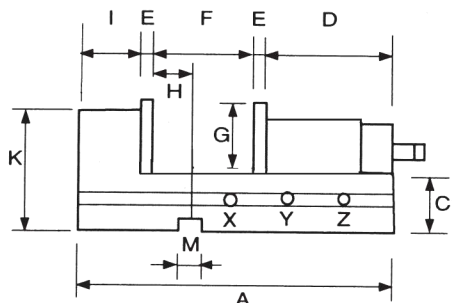
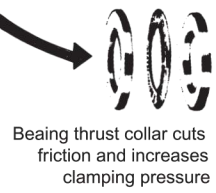


Hydraulic Ang-Fixed Vise



Moveable jaw plates (hardened and ground) increase capacity of 6" vise up to 14 1/2" in-out-side position (dotted lines)

Vies screw defies wear-enclosed for protection



ORDER NO.	A	B	C	D	E	F			G	H	I	J	K	L	M	CLAMPING FORCE	N.W.	CODE NO.
						X	Y	Z										
VAF-4	385	14	58	179	12.5	0-85	85-170	—	42	45	64.5	440	98	105	18	2500kg	22kg	1002-210
VAF-6	505	19	85	250	15.5	0-90	90-180	180-270	57	65	84.5	698	140	152	18	5000kg	50kg	1002-211
VAF-8	576	19	102	252	18.5	0-98	97-198	197-300	62	82	89.5	760	162	200	18	7000kg	80kg	1002-212

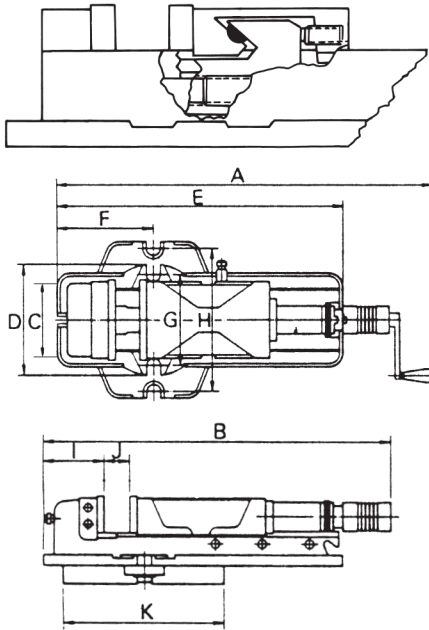
Hydraulic Machine Vise Build Out Type



FEATURES

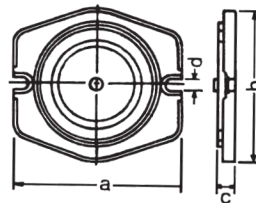
- Rigid material-vise body of ductile iron FCD 60JIS(equal to GGG 60) with 60kgs/mm² or 80,000 psi tensile strength.
- Vise bed flame hardened to HRC 45 and up takes up wear and maintain accuracy for long.
- For multiple use plural vises are available on tolerance of 0.01mm in the height of vise bed and in alignment of the clamping surface of the vise jaw at extra cost.
- Mechanical/hydraulic spindle without original clutch mechanism.
- Down thrust "Semi-sphere Segment" mechanism-eliminates jaw lift and work fillt.
- All surface ground.

Unit:mm



ORDER NO.	A	B	C	D	E	F	G	H	I	J	K	CLAMPING FORCE	N.W.	CODE.NO.
VHO-5	695 920	570 795	130	190	505	180	160	250	105	0- 220	260	3500kg	41kgs	1002-220
VHO-6	750 1060	625 935	160	240	625	208	196	300	125	0- 300	320	4000kg	63kgs	1002-221
VHO-8	830 1140	725 1035	200	280	700	265	240	360	165	0- 310	365	6000kg	102kgs	1002-228

Swivel Base Optional



ORDER NO.	A	B	C	D	N.W.	CODE NO.
HSO-5	285	263	35	16	12.5 Kgs	1002-222
HSO-6	330	320	40	18	16.5 Kgs	1002-223
HSO-8	415	413	50	21	35Kgs	1002-229

Double Clamp Vise

**NEW DESIGN & UNIQUE CONSTRUCTION.
EXCLUSIVELY DESIGNED WITH COMBINATION OF
MACHINABLE FIXTURE JAWS AND HARD JAWS**



DOUBLE CLAMP SEAT:
One handle can simultaneously operate two movable jaws and clamps 2 pieces of workpiece of same size or different size or one large workpiece. This model can increase efficiency and productivity of CNC machine.

HIGH & EXCELLENT RIGIDITY.

The vise is made of FCD. 80000 PSI (55 kg/cm²) Ductile iron, and the slide ways are hardened to HRC45. The rigid construction prevents the base from distortion. Precision made to high accuracy standard.

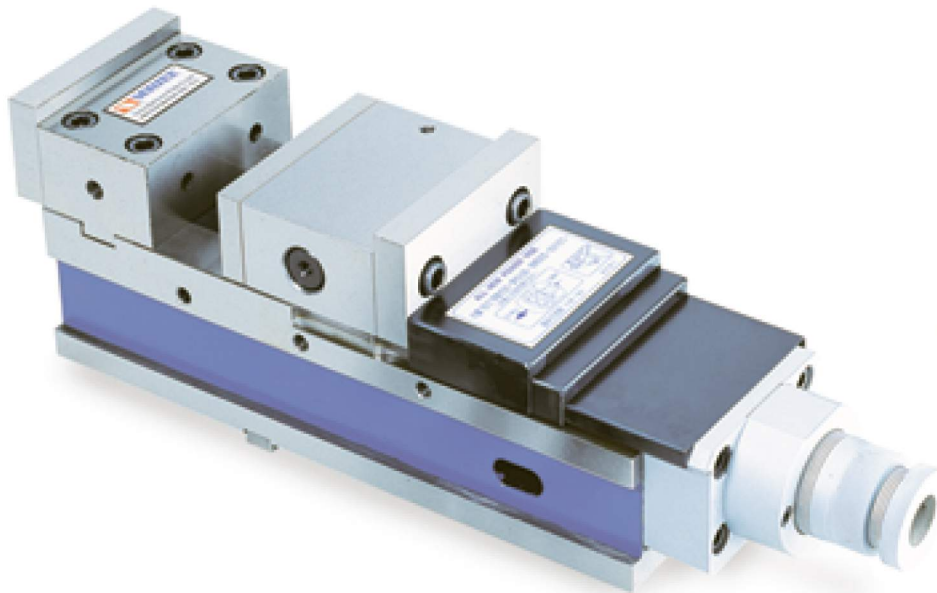
1. The whold body is precisely grounded and height tolerance is within 0.025m/m(0.001"), therefore several vises can be lined p for production
2. The movable jaws provide alignment to workpiece without jaw lift.
3. The height of jaw plate is 30% higher than the other vise with the same size.
4. There are 6 kinds of clamping ways to meet workpieces of different shapes and sizes.

Unit:mm

ORDER NO.	A	B	C	D	a	b	c	H	e	f	g	h	i	j	k	l	m	Guide Block	Weight (kgs)	CODE NO.
VMC-4D	102	45	18-76	0-57	380	104	110	65	107	497	16	29	25	115	170	54	22.5	18	20	4005-020
VMC-6D	152	58	34-102	0-68	495	154	140	90	135	610	18	46	30	165	220	68.4	31.8	18	63	4005-021

Mechanical Power Vise

HIGH CLAMPING POWER AND LARGE JAW CLAMPING CAPACITY



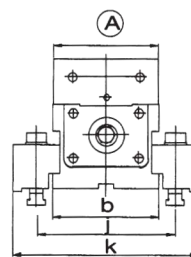
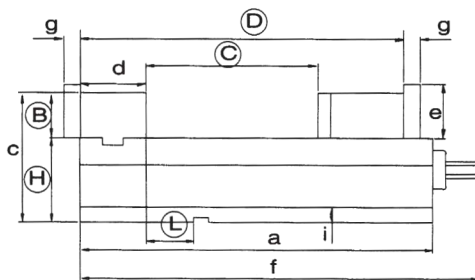
STANDARD ACCESSORIES



INSPECTION SPECIFICATION

NO.	Inspection Item	Per (100mm) 4"	Guaranteed
1	Parallelism:running face to bottom of bed.		0.01mm (0.0004")
2	Squareness:between running face and jaw plate.		0.03mm (0.0012")
※ 3	Squareness:both sides to fixed jaw plate.		0.02mm (0.0008")
4	Parallelism:keyways on bottom of bed to jaw plate.		0.02mm (0.0008")
5	Squareness:keyways on bottom of bed to jaw plate.		0.02mm (0.0008")
6	Parallelism:running face of the test block to bottom of bed.		0.02mm (0.0008")
	Lift can be controlled when clamping test block.		0.015mm (0.0006")

- 1.To solve all your clamping problems on your machining centers.
- 2.Tons of pressure can be applied to the workpiece with minimum operator's effort. Using the new POWER VISE", it can not release the workpiece until the operator manually releases it.
- 3."Mechanical booster". Provides a steady clamping force against shocks and vibrations during the operations, since it clamps the workpiece resiliently with an aid of the "disc-springs" mounted inside.
- 4.Powerfull VMC-6Q clamping pressure can be increased up to 5500kg/cm²; VMC-5Q, 3500kg/cm²; VMC-4Q, 3000kg/cm² Clamping force freely adjusted with the guidance of graduation lines.



Unit:mm

ORDER NO.	A	B	C	D	a	b	c	d	e	f	g	j	i	k	H	L	Key way	Weight	CODE NO.
VMC-4Q	100	44	128	285	288	102	129	73	52	398	20	18	139	19	85 ±0.02	85 ±0.02	14	32 kgs	4005-001
VMC-5Q	125	53	203	382	385	127	153	78	63	508	20	18	164	216	85 ±0.02	85 ±0.02	18	49 kgs	4005-002
VMC-6Q	160	53	275	465	480	162	168	86	63	605	20	21	199	252	85 ±0.02	85 ±0.02	18	80 kgs	4005-003

* HORIZONTAL & VERTICAL 2 WAY VISE.

CLAMPING PRESSURE: VMC-4Q, 300kg/cm², VMC-5Q, 350kg/cm², VMC-6Q, 550kg/cm².

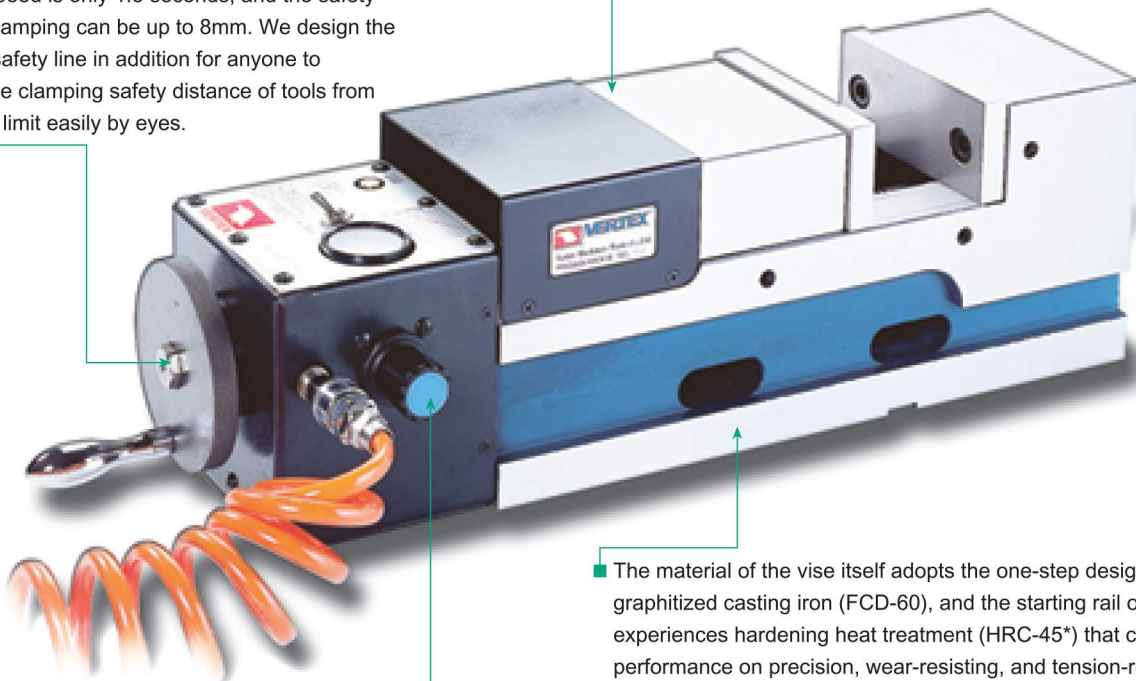
Precision Pneumatic Ang-Fixed Power Vise

Suitable for mass production and to be used on machine centers, milling machines, drilling machines and special purpose machines.



The greatest safety distance of clamping:
The switch speed is only 1.5 seconds, and the safety distance of clamping can be up to 8mm. We design the hand wheel safety line in addition for anyone to distinguish the clamping safety distance of tools from exceeding to limit easily by eyes.

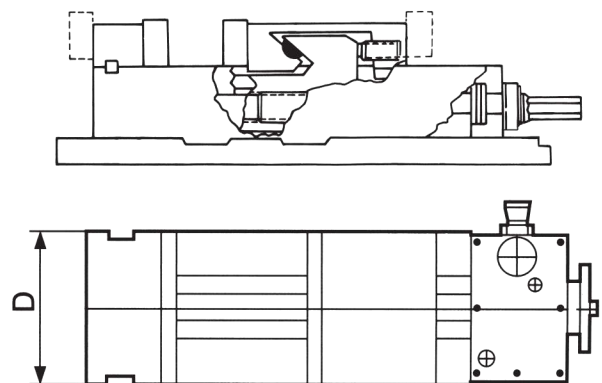
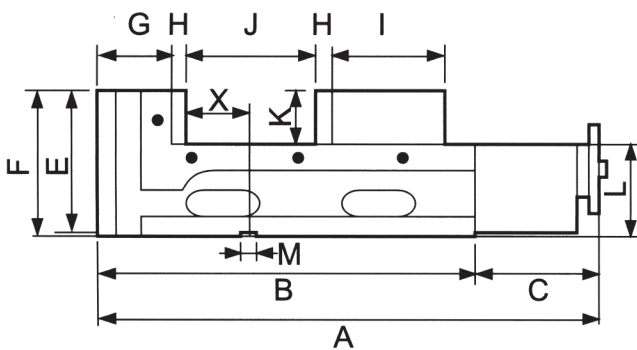
Down trust "semi-spherical segment" mechanism eliminates jaw lifing and work-piece lifing.



The material of the vise itself adopts the one-step design of highductility graphitized casting iron (FCD-60), and the starting rail of the two sides experiences hardening heat treatment (HRC-45*) that can assure good performance on precision, wear-resisting, and tension-resisting.

If the source of air pressure is under low pressure exertion of 8kgf/cm², it can achieve the super strong clamping capacity of 9000kg/cm². The clamping capacity from 0~9000kg/cm² can be freely set and adjust via pressure regulator. Automatically seeking the highest source of air pressure:

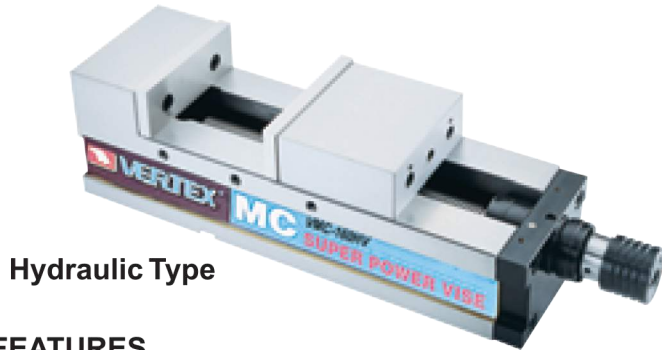
When the pressure regulator sets the regulator sets the required pressure, it will not be out of order because the source of air pressure is low.



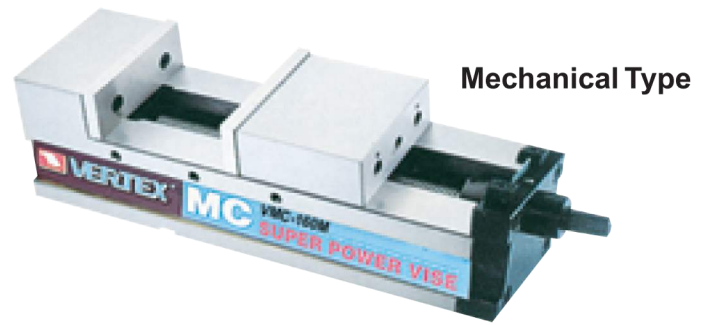
Unit:mm

ORDER NO.	A	B	C	D	E	F	G	H	I	J	K	L	M	Gripping Force (kgf)	N.W. (kg)	G.W. (kg)	CODE NO.
VMC-5P	520	380	140	130	157	160	86	15	110	0-150	55	105	18	6000	45	50	4005-070
VMC-6P	540	400	140	160	160	163	86	15	120	0-160	58	105	18	6000	47	56	4005-071
VMC-6PL	630	490	140	160	160	163	86	15	120	0-250	58	105	18	6000	53	62	4005-072
VMC-7P	600	460	140	180	170	173	90	18	130	0-200	63	110	18	9000	65	72	4005-073
VMC-8P	610	470	140	200	170	173	90	18	140	0-200	63	110	18	9000	70	80	4005-074
VMC-8PL	710	570	140	200	170	173	90	18	140	0-300	63	110	18	9000	79	80	4005-075

MC Power Machine Vise for machining center



Hydraulic Type



Mechanical Type

FEATURES

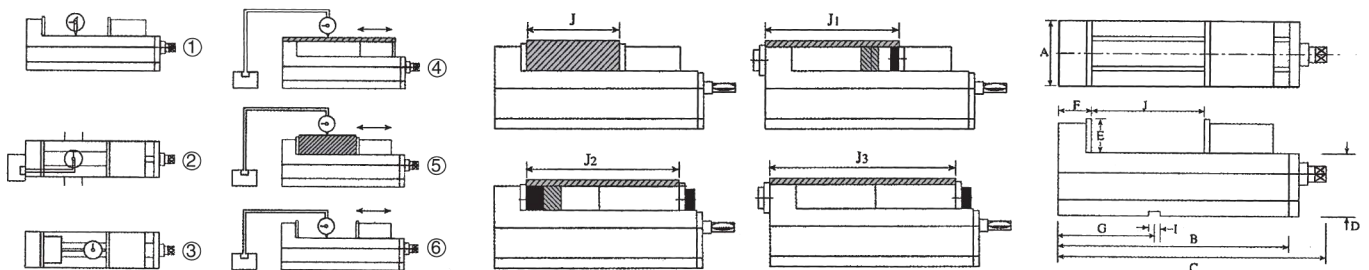
1. Angle fixed type super power precision hydraulic vise, suitable for vertical and horizontal combined cutting & processing machine for heavy cutting.
2. Angle fixed type spherical segment ball can produce the force for angle locking -- which can release the vise plate floating upward and make no slant of the workpiece.
3. Powerful material - cast iron, and has strong anti-tension, high abrasion, which can keep long durability for abrasion with high precision.
4. The slide surface of vise bench is treated by hardening above HRC45° which can keep long durability for abrasion with high precision.
5. Movable jaw adjusting screw can adjust the appropriate precision for the vise at any time.
6. Four setting positions of the jaw plate are available, widening the jaw plate opening.



Performed Sided Vertically.

Accuracy testing standard

NO.	Item	JIS grade 1	Guaranteed
1	Vise side-lock on bottom to slide way square	0.020/100mm	0.010/100mm
2	Keyways on bottom of vise bed square to clamping surface of jaw plate	0.020/100mm	0.015/100mm
3	Both jaw plate parallel	0.020/100mm	0.020/100mm
4	Max opening test block parallel to bottom of vise body	0.050/100mm	0.030/100mm
5	Top of rectangular test block clamped tightly by jaw parallel to bottom of vise body	0.030/100mm	0.020/100mm
6	Surface of vise bed parallel to bottom of vise body	0.020/100mm	0.015/100mm



Hydraulic Type

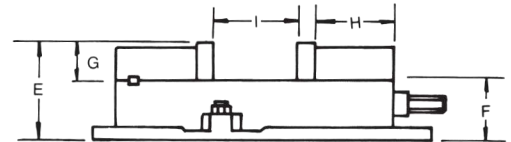
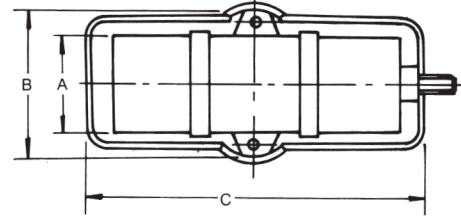
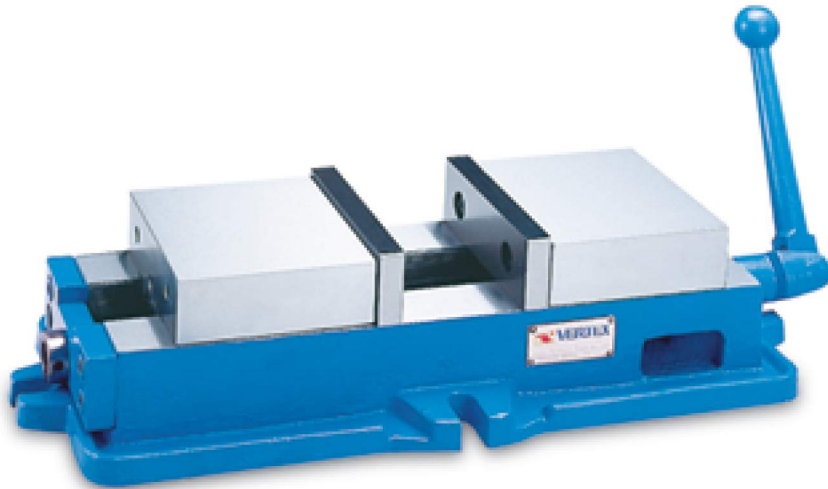
ORDER NO.	A	B	C	D	E	F	G	I	Jaw Opening (Max.)				Clamping Force	Weight Body	CODE NO.
									J	J1	J2	J3			
VMC-100HV	101	340	470	85	48	80	125	16	125	190	230	320	4000 kgf	27 kgs	4005-060
VMC-130HV	131	405	535	95	55	85	150	18	180	240	290	380	5000 kgf	40 kgs	4005-061
VMC-160HV	161	495	625	105	58	100	165	18	240	320	360	470	6500 kgf	58 kgs	4005-062
VMC-200HV	201	570	700	110	63	108	190	18	280	360	420	540	8000 kgf	87 kgs	4005-063

Mechanical Type

ORDER NO.	A	B	C	D	E	F	G	I	Jaw Opening (Max.)				Weight Body	CODE NO.
									J	J1	J2	J3		
VMC-100M	101	340	430	85	48	80	125	16	125	190	230	320	26 kgs	4005-064
VMC-130M	131	405	495	95	55	85	150	18	180	240	290	380	39 kgs	4005-065
VMC-160M	161	495	585	105	58	100	165	18	240	320	360	470	57 kgs	4005-066
VMC-200M	201	570	666	110	63	108	190	18	280	360	420	540	86 kgs	4005-067

Compound Ang-Fixed Vice

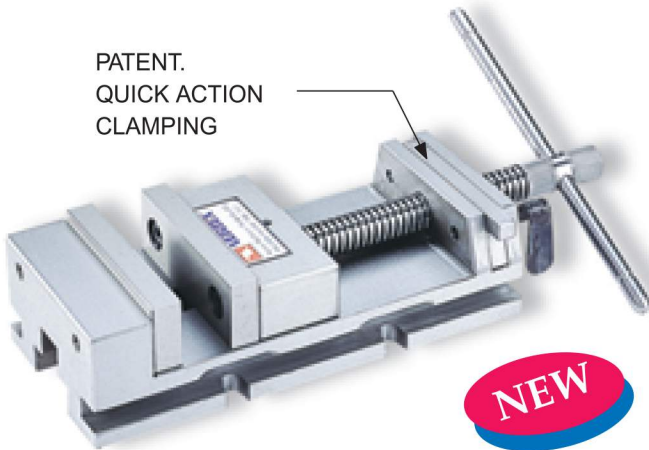
Suitable for irregular workpiece. Rapid and convenient centralizing.



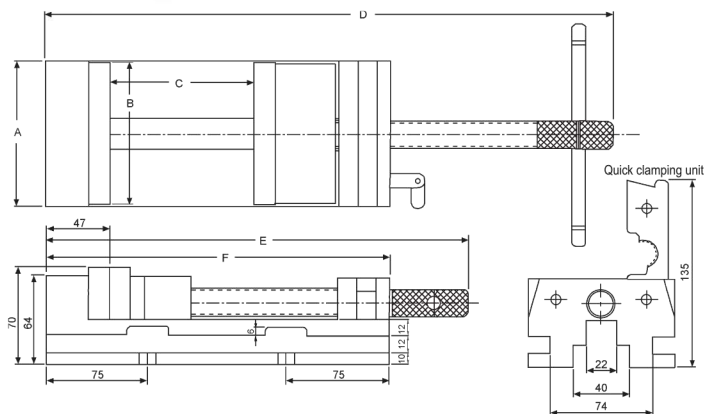
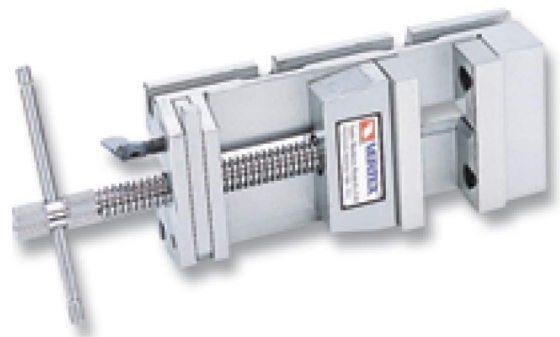
ORDER NO.	A	B	C	E	F	G	H	I	G.W. kgs	CUFT	CODE.NO.
VCV-6	150	210	430	120	70	48	120	155	52	1.8	1002-260

Quick Setting Vice

PATENT.
QUICK ACTION
CLAMPING

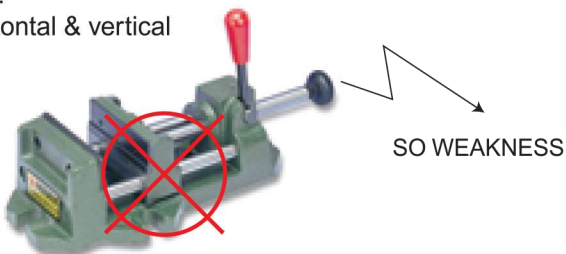


NEW



FEATURES

1. Special design for quick clamping. (From the acme thread shaft stationly)
2. Quick setting by moving sliding. Big clamping capability.
3. Operations very quick and easy, can be increased efficiency for works very much.
4. Good for production or prototype work.
5. Suit for milling machine, grinder machine, precision drilling machine using.
6. Accurate grounded and assembled.
7. Precision cut acme thread, it can get 900kgs high claming force.
8. Horizontal & vertical



ORDER NO.	A	B	C	D	E	F	G.W.	CODE NO.
VQS-3	82	80	80	365	285	224	7	1002-262
VQS-4	106	104	104	411	309	250	8	1002-263
VQS-5	132	130	130	465	333	274	10	1002-264

B-Type Milling Vise

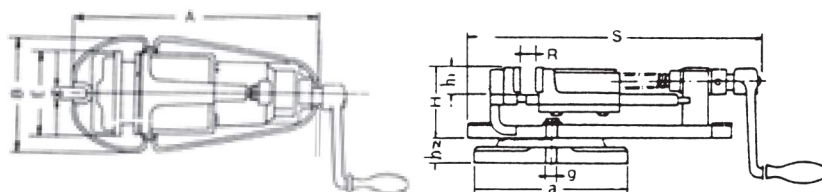


Please refer to page 11 Fig.2

Unit:mm

ORDER NO.	E	A	B	H	R	S	a	h1	h2	g1	g2	G.W. kgs	CODE NO.
VBV-4	100	270	140	79	65	305	212	33	28	12	12	13	1002-280
VBV-5	125	350	180	96	100	410	280	37	35	15	15	25	1002-281
VBV-6	150	400	210	105	114	460	245	40	40	16	16	41	1002-282

- A wider bottom to increase clamping force.
- Groove device to collect cutting oil.



Free Vise



Unit:mm

ORDER NO.	DIMENSION(WxHxL)	CLAMPING CAPACITY(HxL)	WEIGHT(2PCS)	CODE NO.
FV-350	75x67x150mm	140x350mm	4.5kgs	1002-290
FV-450	100x90x200mm	180x450mm	9kgs	1002-291
FV-550	125x120x250mm	250x550mm	21kgs	1002-292

FV TYPE IS LIGHT DUTY.

Unit:mm

ORDER NO.	CLAMPING HEIGHT	SIZE	N.W.	CODE NO.
SV-62	56	70X80X125	5.5kgs	1002-293
SV-85	82	85X92X200	11kgs	1002-294
SV-125	130	130X145X245	22kgs	1002-295

Quick Vise



ORDER NO.	Width of Jaws	Jaws Opening	G.W. kgs	CODE NO.
DV-3"	3-1/4"	2-3/4"	3.5	1002-300
DV-4"	4-5/16"	4-1/4"	6.0	1002-301

FOR DRILL MACHINE

High tensile FC25 casting.
Instant setting by moving sliding steel bar attached to movable jaw.