

STANDARD CLAMPING ELEMENTS



POWER CLAMP



6 - 10

CLAMPS



11 - 38

SUPPORT BLOCKS



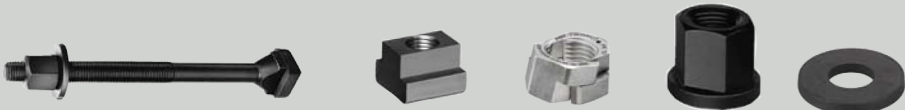
39 - 44

SETTING ELEMENTS
MANDREL AND FLOATING CLAMP



45 - 66

CLAMPING BOLTS, NUTS AND WASHERS



67 - 89

CLAMPING SETS AND ACCESSORIES



90 - 96

PULL-DOWN CLAMPS



97 - 115

POSITIONING ELEMENTS



116 - 128

STOPS AND PRECISION T-NUTS



129 - 134

CENTRING CLAMP AND ECCENTRIC CLAMP



135 - 144

PARALLEL SUPPORTS-SET, SUPER-PRECISION

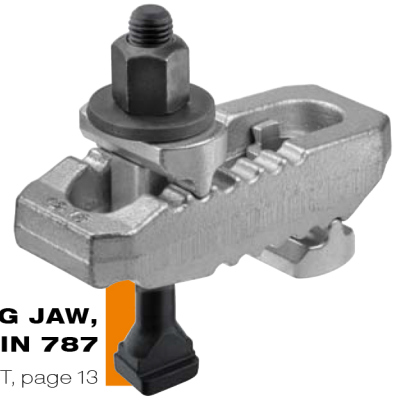
No. 6347SP, page 118



Optimised wooden case
for perfect handling!

„CROCODILE“ CLAMPING JAW, COMPLETE WITH DIN 787

No. 6312VT, page 13



ALUMINIUM BASE

No. 6406AF, page 50

NEW!



POWER CLAMP

No. 7600, page 6
New size!



- + Low installation height
- + Clamping force up to 22 kN or 49 kN
- + Continuously adjustable

SPACER ELEMENT

No. 7600Z, page 7
New size!



PRESSURE PAD

No. 7600D, page 8
New sizes!



NOT ONLY INCREDIBLE IN TERMS OF USE - OUR POWER CLAMP ALSO BOASTS AN IMPRESSIVE PRODUCT DESIGN.

Powerful and reliable in use and now also with an outstanding product design.

The AMF power clamp wins the **GERMAN DESIGN AWARD 2017** in the „Special Mention“ category.

This award recognises achievements with designs that feature especially successful styling - an accolade that honours the dedication of companies and designers.

**TAKE A LOOK AT OUR
PRIZE WINNER!**
MORE FROM PAGE 6 ...



THE POWER CLAMP THAT KEEPS ITS PROMISES

- > **Uses:** All clamping tasks in cutting and non-cutting finishing operations. There are no limits to the possible uses in tool-making, injection moulding, presses and die-cutters as well as in model- and mould-making.
- > **Characteristics:**
 - > Clamping force up to 22 kN or 49 kN
 - > Low installation height
 - > Fast and simple clamping possible
 - > Continuously adjustable

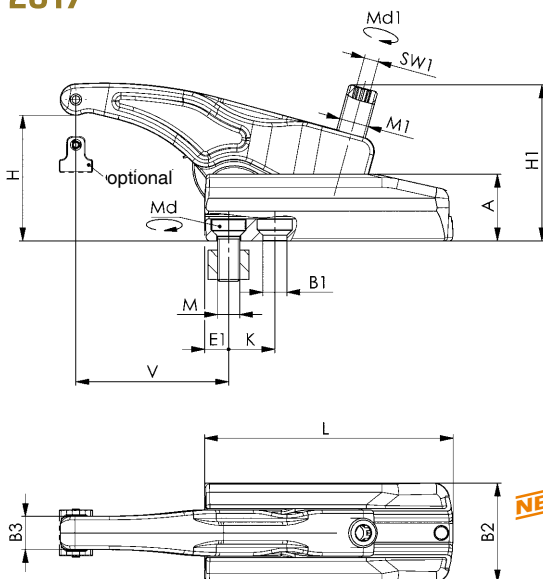
When using clamps in non-cutting and cutting metal finishing processes, as well as in mould making, clamping force and precision that meet the highest demands are required. With the sliding power clamp made of alloyed tempered steel, we offer an exceptionally robust and versatile mechanical clamping element, which can achieve extremely high clamping force of up to 49 kN. The power clamp, which is usable both horizontally and vertically, can be fastened to regular T-slot tables using T-nuts or, alternatively, to grid pallets using threaded mounting.

No. 7600

Power clamp

Continuously adjustable clamping element made of alloyed tempered steel in forged, black galvanised design. Complete with mounting kit 7600BFS. Thrust piece in smooth and ribbed variant, optionally available.

NEW!



Order no.	Size	max. load [kN]	M	Slot	H	V	L	Weight [g]
556406	22*	22	M12	14	5 - 38	15 - 50	65	700
556186	30	30	M12	14	6 - 68	13 - 110	135	2013
556187	30	30	M16	18	6 - 68	16 - 114	135	2045
556189	32	32	M12	14	6 - 50	12 - 82	95	1462
556190	40	40	M16	18	6 - 50	15 - 95	110	2262
556188	43	43	M16	18	5 - 80	16 - 134	155	3158
554198	49	49	M20	22	7 - 88	19 - 165	175	5928

* Size 22 kN available from May 2018.

Application:

1. Position carrier element on the tool table and secure with the specified tightening torque Md.
2. Move the clamp arm to the desired position.
3. Moving the adjusting screw clamps the workpiece.

Advantage:

- Low installation height
- High clamping force of 22 - 49 kN
- Height and length continuously adjustable
- The very robust design enables quick and easy clamping
- Elements easy to install
- For use in T-slots 14 - 28 mm and/or grid plates M12, M16, M20
- 2 thrust piece variants

Note:

- The max. load may differ, depending on the manner of clamping and condition of the threads (lubrication).
- To reduce the wear on the adjusting screw, we recommend the use of AMF screw compound no. 6339. It possesses a synergistic combination of highly-effective solid lubricants and is heat-resistant and does not wash out.
- Use only with the associated AMF mounting kit 7600BFS.

Dimensions:

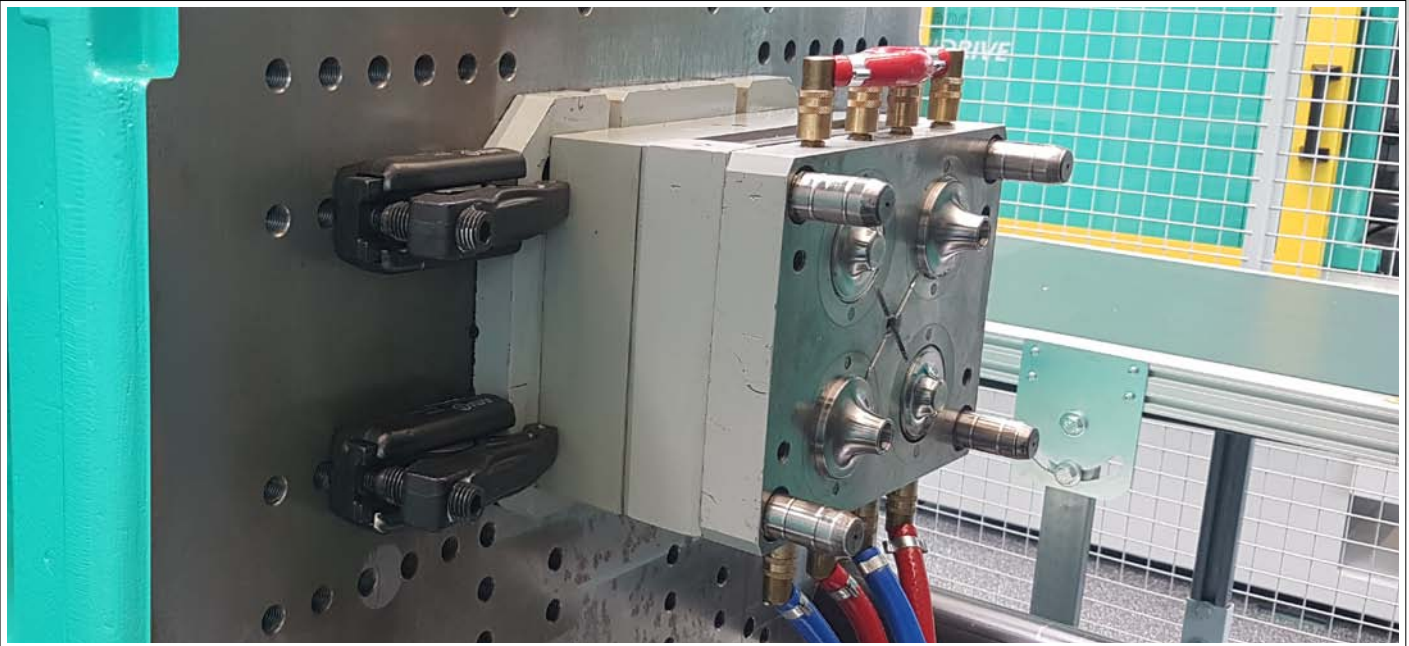
Order no.	Size	A	B1	B2	B3	E1	H1	K	M1	SW1	Md 1 [Nm]	Md [Nm]
556406	22*	30	13	45	13	11	58	-	M12	6	-	-
556186	30	36	13	54	18	13	85	25	M16	8	110	70
556187	30	36	17	54	18	16	85	28	M16	8	110	150
556189	32	36	13	54	18	12	78	20	M16	8	120	70
556190	40	42	17	60	20	15	92	26	M20	10	150	150
556188	43	42	17	60	20	16	105	32	M20	10	220	150
554198	49	52	21	75	25	19	125	36	M24	12	220	200

NEW!

CAD



Subject to technical alterations.



No. 7600Z

Spacer element

Made of alloyed tempered steel in forged, black galvanised design. Complete with mounting kit.

NEW!

Order no.	Size	M	Slot	A	L	Weight [g]
556407	22*	M12	14	35	65	480
554821	30	M12	14	60	135	2300
554822	32	M12	14	60	95	1570
554823	40	M16	18	70	110	2290
554824	43	M16	18	70	155	3344
554825	49	M20	22	80	175	5286

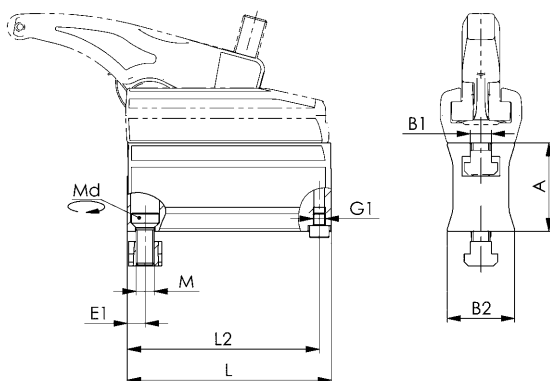
* Size 22 kN available from May 2018.

Advantage:

- Additional clamping heights can be achieved by installing multiple spacer elements
- Continuous transition between the clamping heights
- For use in T-slots 14 - 28 mm and/or grid plates M12, M16, M20

Note:

Use only the corresponding AMF mounting kit 7600BFS.



Recommendations



No. 6339, page 95

Dimensions:

NEW!

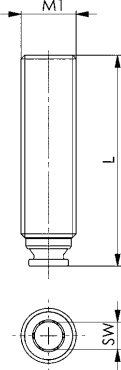
Order no.	Size	B1	B2	E1	G1	L2	Md [Nm]
556407	22*	14	36,0	12	M6	58,5	-
554821	30	14	44,5	12	M8	127	70
554822	32	14	44,5	12	M8	88	70
554823	40	18	47,5	16	M8	100	150
554824	43	18	47,5	16	M8	145	150
554825	49	22	58,0	19	M10	165	200

Subject to technical alterations.

No. 7600S

Ball pressure screw

Tempered steel, burnished.



NEW!

Order no.	Size	M1	L	SW	Weight [g]
556408	22	M12	43	6	30
553353	30	M16	62	8	80
554214	32	M16	55	8	70
554215	40	M20	65	10	128
553441	43	M20	78	10	165
554216	49	M24	93	12	275

No. 7600D

Pressure pad

Complete with dowel pin.
Stainless steel.



DG

DR

NEW!
NEW!

Order no.	Size	Form	A	A1	B	C	Weight [g]
556409	22	DG	14	4,5	19	12	11
556410	22	DR	14	4,5	19	12	10
553351	30/32	DG	19,5	6,0	25	18	28
553352	30/32	DR	19,5	6,0	25	18	27
553442	40/43	DG	24,0	6,5	30	20	47
553443	40/43	DR	24,0	6,5	30	20	48
554301	49	DG	28	7,0	36	25	75
554302	49	DR	28	7,0	36	25	78

DG = smooth contact surface, DR = wavy contact surface

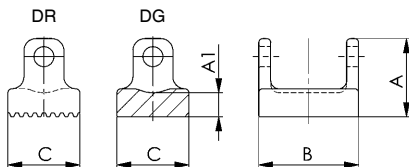
Recommendations



ISO 2936C



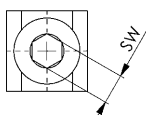
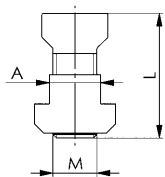
No. 6339,
page 95



No. 7600BFS

Mounting kit

comprising flat-head screw strength class 12.9 and T-nuts
DIN 508.



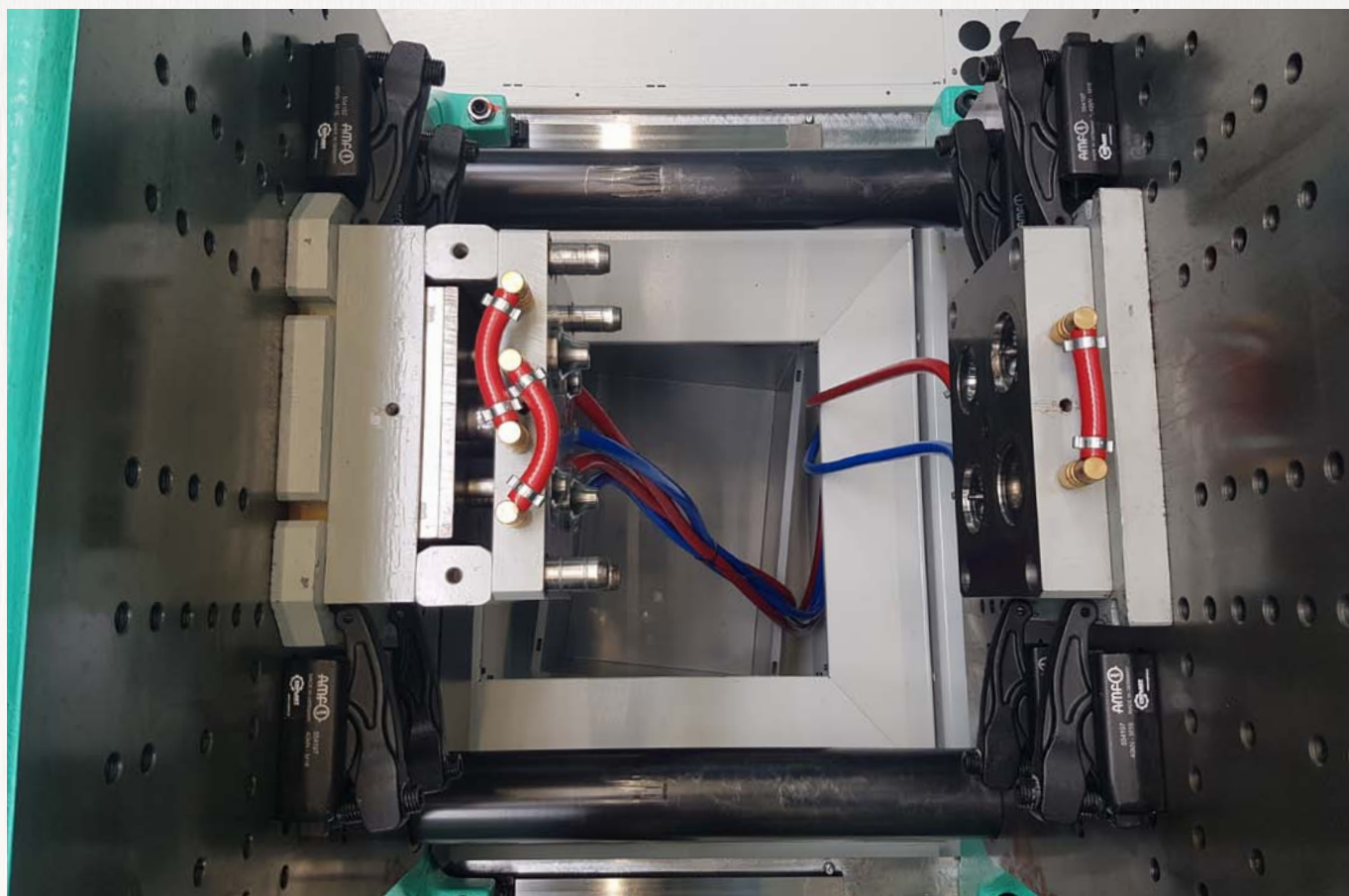
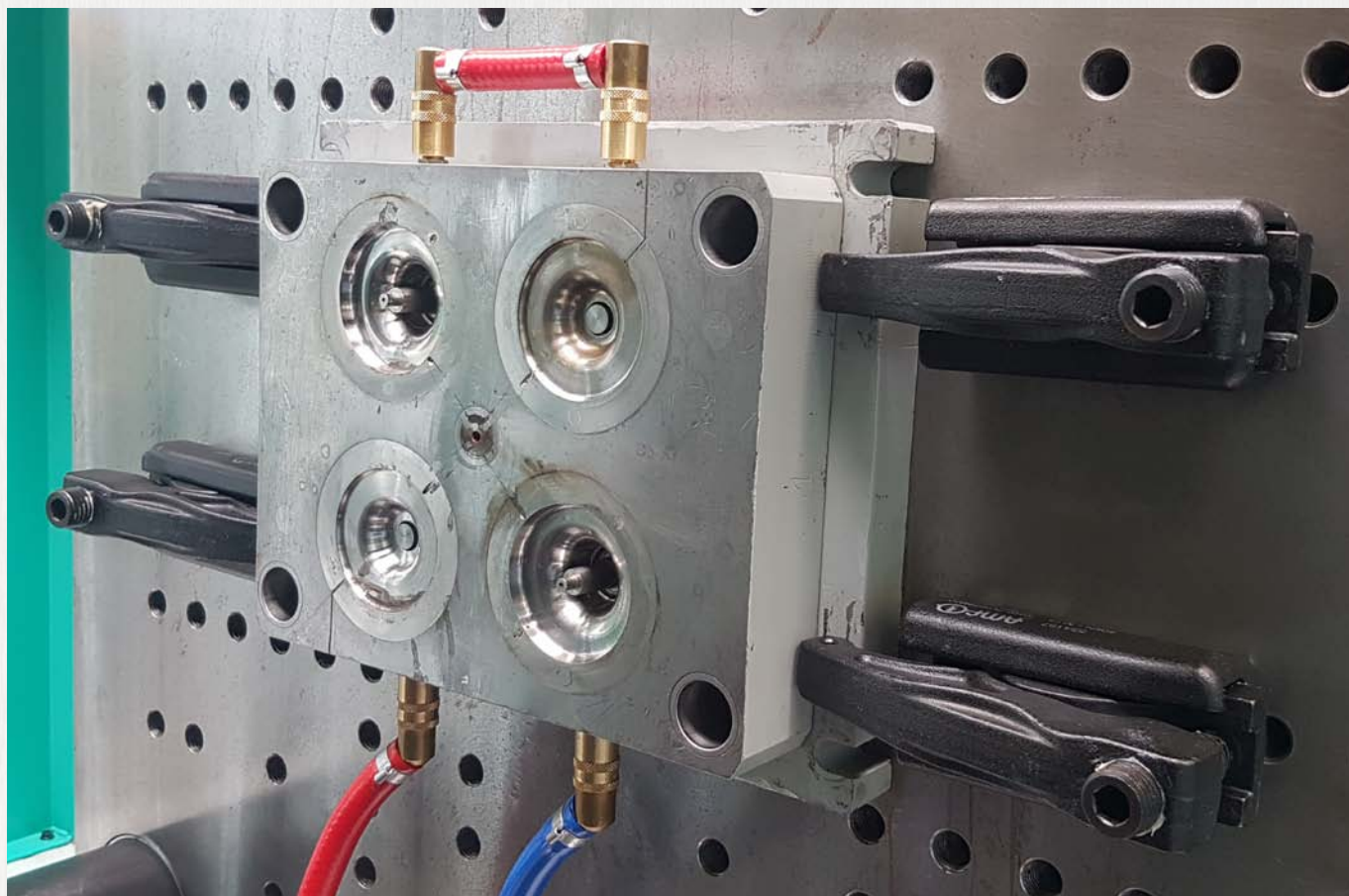
NEW!

NEW!

Order no.	Size	A	M	L	SW	Weight [g]
556576	22	14	M12	25,5	6	36
556152	30 / 32	14	M12	27,5	8	70
556153	30 / 32	16	M12	31,5	8	98
556154	30 / 32	18	M12	31,5	8	125
556155	30	18	M16	33,0	8	143
556156	30	20	M16	37,0	8	208
556157	30	22	M16	41,0	8	270
556158	30	24	M16	41,0	8	348
556159	40 / 43	18	M16	35,0	10	145
556160	40 / 43	20	M16	39,0	10	195
556161	40 / 43	22	M16	43,0	10	264
556162	40 / 43	24	M16	43,0	10	350
554298	49	22	M20	43,5	12	300
554299	49	24	M20	46,5	12	390
554300	49	28	M20	53,5	12	505

Subject to technical alterations.





Subject to technical alterations.