

# STANDARD CLAMPING ELEMENTS



**POWER CLAMP**

6 - 10



**CLAMPS**

11 - 38



**SUPPORT BLOCKS**

39 - 44



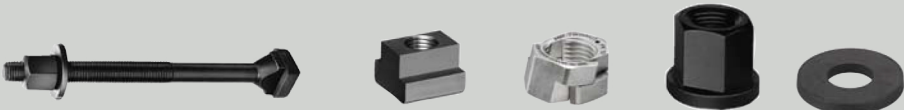
**SETTING ELEMENTS  
MANDREL AND FLOATING CLAMP**

45 - 66



**CLAMPING BOLTS, NUTS AND WASHERS**

67 - 89



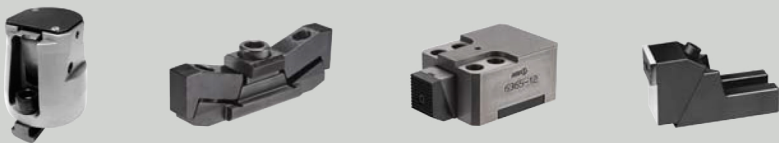
**CLAMPING SETS AND ACCESSORIES**

90 - 96



**PULL-DOWN CLAMPS**

97 - 115



**POSITIONING ELEMENTS**

116 - 128



**STOPS AND PRECISION T-NUTS**

129 - 134



**CENTRING CLAMP AND ECCENTRIC CLAMP**

135 - 144



## PARALLEL SUPPORTS-SET, SUPER-PRECISION

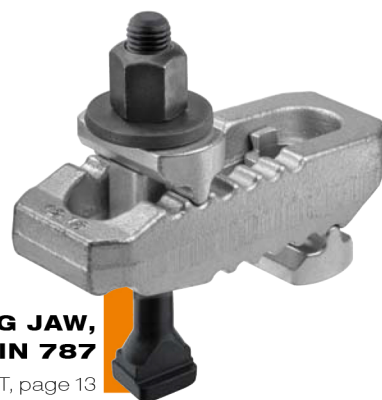
No. 6347SP, page 118



Optimised wooden case  
for perfect handling!

## „CROCODILE“ CLAMPING JAW, COMPLETE WITH DIN 787

No. 6312VT, page 13



## ALUMINIUM BASE

No. 6406AF, page 50

**NEW!**



## POWER CLAMP

No. 7600, page 6  
New size!



- + Low installation height
- + Clamping force up to 22 kN or 49 kN
- + Continuously adjustable

## SPACER ELEMENT

No. 7600Z, page 7  
New size!



## PRESSURE PAD

No. 7600D, page 8  
New sizes!





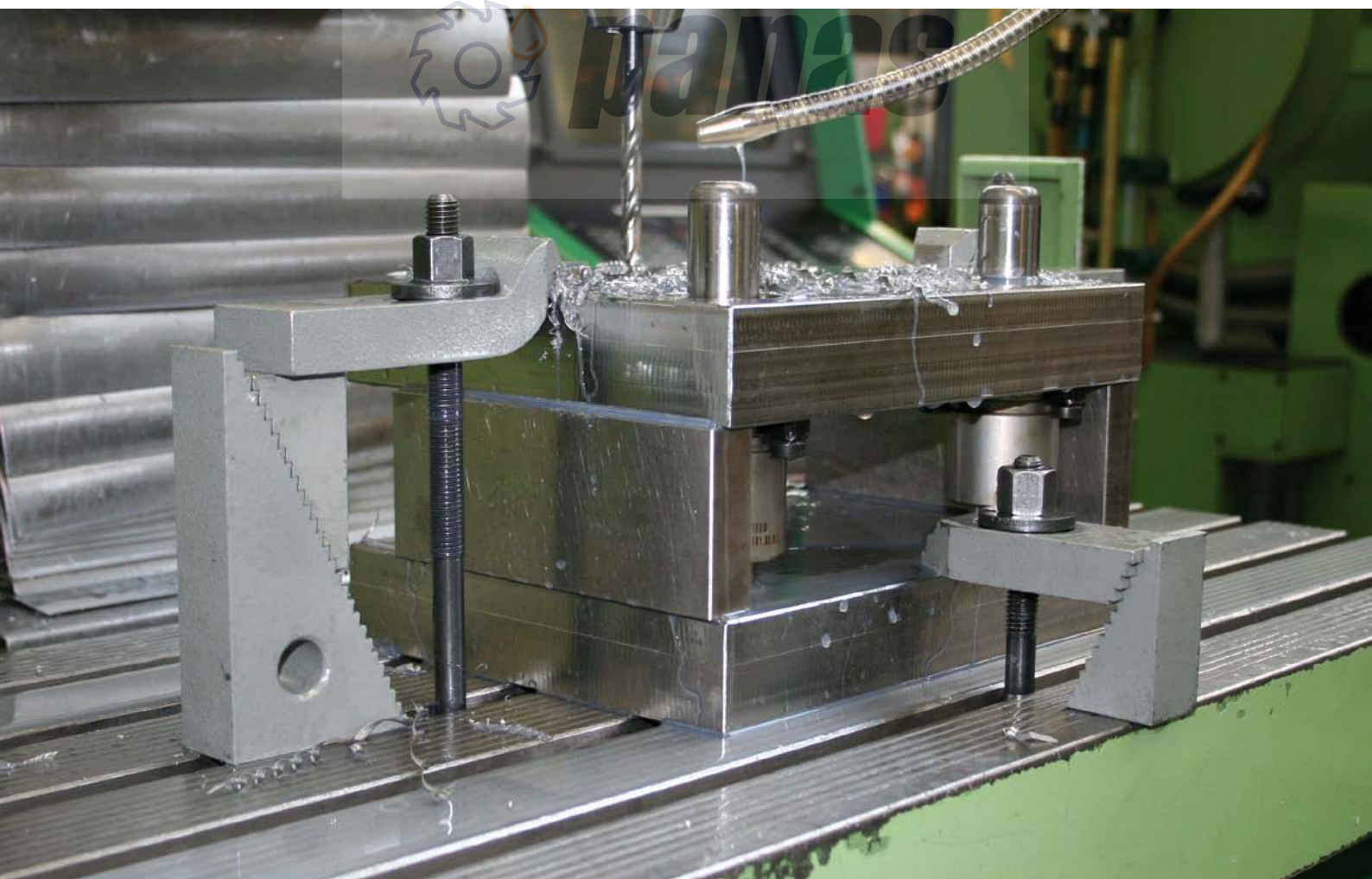
## THE MOST IMPORTANT FACTS ABOUT SUPPORT BLOCKS

- > **Material:** High quality tempering steel resp. castings.
- > **Machining:** All support blocks shown, have machined base- and contact faces. The serrated elements are precisely milled or broached. Leveled work support and safe force transmission are therefore provided.
- > **Execution:** To DIN regulations.
- > **Finishing:** All support blocks are abrasionproof quality varnished.

The following pages contain suitable support blocks, finely graduated or infinitely adjustable, for any application. Support heights from 12.5 to 340 mm are achievable with all support blocks.

For clamping heights over 340 mm, we recommend our screw jacks on pages 53 to 55.

- > Conventional workpiece clamping for drilling and pinning a fixture.



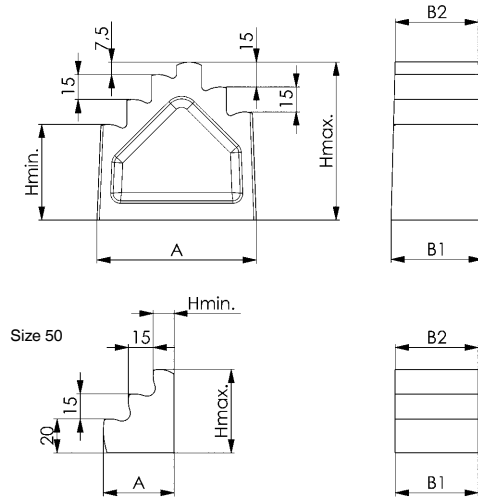
## DIN 6318

### Step blocks

with step increments of 7.5 mm each. Machine casting, varnished, base and step faces milled.



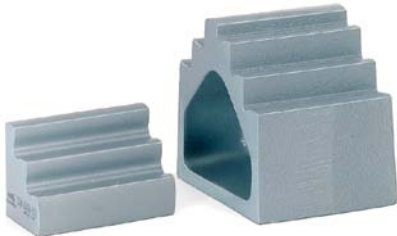
Order no.	Size	H min.	H max.	A	B1	B2	Weight [g]
71365	50	12,5	50	42,5	50	50	500
71373	95	57,5	95	95,0	55	50	1600
71381	140	102,5	140	100,0	60	50	2000
71399	185	147,5	185	105,0	65	50	2900
71407	230	192,5	230	110,0	70	50	3600
71415	275	237,5	275	115,0	75	50	4300
71423	320	282,5	320	120,0	80	50	5200



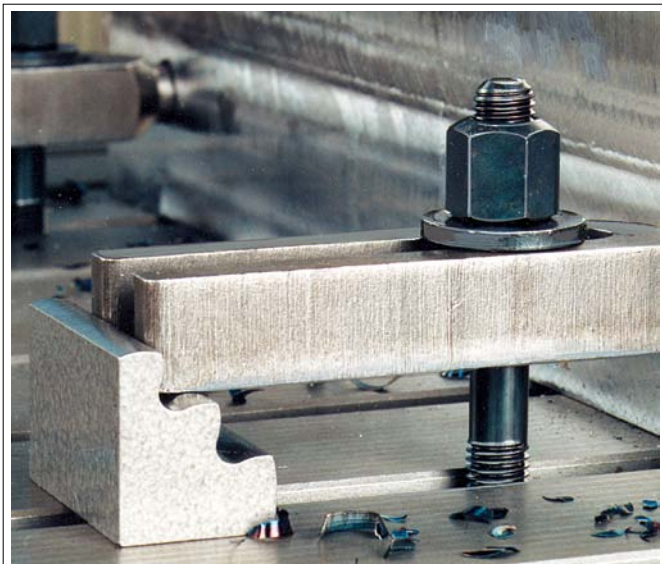
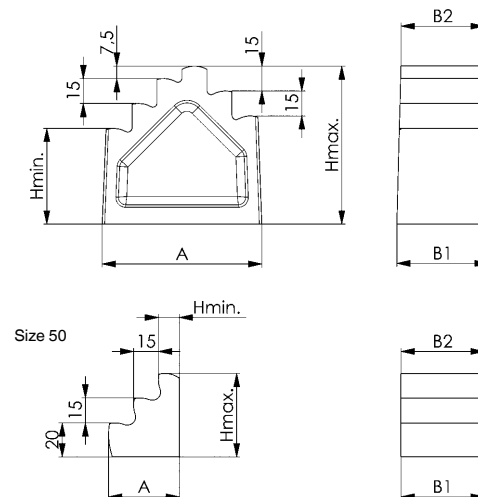
## No. 6318B

### Step blocks, wide

with step increments of 7.5 mm each. Machine casting, varnished, base and step faces milled.



Order no.	Size	H min.	H max.	A	B1	B2	Weight [g]
71480	50	12,5	50	42,5	80	80	800
71498	95	57,5	95	95,0	85	80	2300
71506	140	102,5	140	100,0	90	80	3450



## No. 6500E

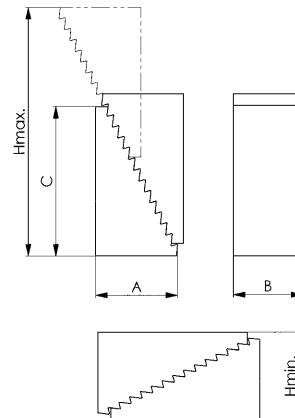
### Universal step blocks

Step increments: vertical 4.65 mm, horizontal 2.3 mm.  
Tempering steel, varnished.

Order no.	Size	H min.	H max.	A	B	C	Weight [g]
73296	1	23	51	19,0	30	33	90
73304	2	39	107	35,5	30	66	300
73312	3	71	208	68,0	30	131	1050

### Application:

For use in pairs with all clamps and single use with clamp no. 6314Z.



### Recommendations



No. 6314Z,  
page 21



No. 6501,  
page 42

CAD



## No. 6500H

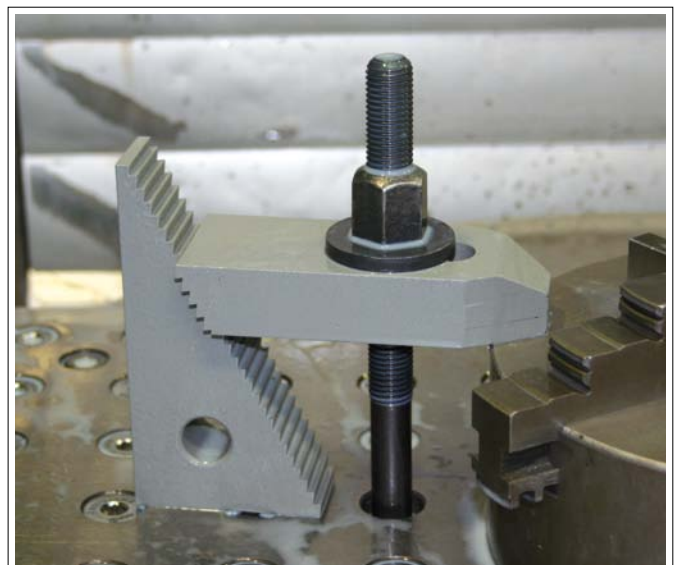
### Universal step block set

in solid wooden case with lid.  
Tempering steel, varnished.

Order no.	Contents	H min.	H max.	Case L x B x H	Weight [Kg]
73346	8x6500E-1, 8x6500E-2, 4x6500E-3	23	208	280x155x40	8,4

### Application:

For use in pairs with all clamps and single use with clamp no. 6314Z.



Subject to technical alterations.

## No. 6501

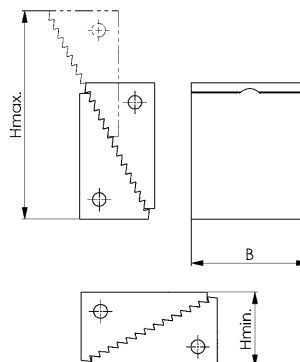
### Step block

contact face 60 mm wide. With link spring.  
Step increments: vertical 4.65 mm, horizontal 2.3 mm.  
Tempering steel, varnished.

Order no.	Size	H min.	H max.	B	Weight [g]
73353	2	37	107	60	1000

#### Note:

The two parts of this AMF-support blocks are linked with a spring for easy handling.



## No. 6501M

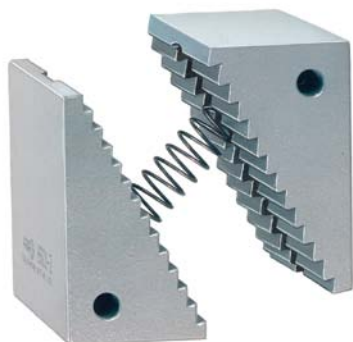
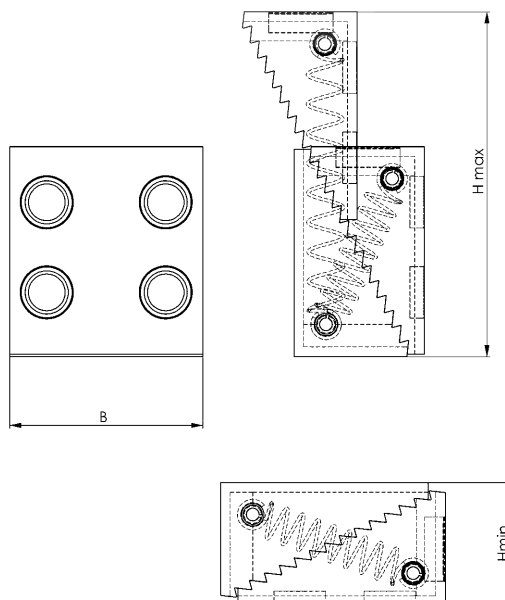
### Support block with magnet

Mounting surface 60 mm wide, with connecting spring.  
Step increments: vertical 4.65 mm, horizontal 2.3 mm.  
Tempered steel, burnished.

Order no.	Size	H min.	H max.	B	Weight [g]
373969	2	37	107	60	980

#### Note:

The two parts of this AMF support block are connected by a spring for ease of handling.  
Holding force 4 magnets = 380 N  
Holding force 2 magnets = 280 N



Version with connecting springs no. 6501 and 6501M



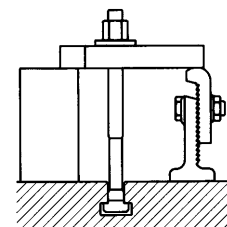
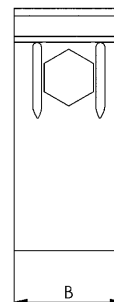
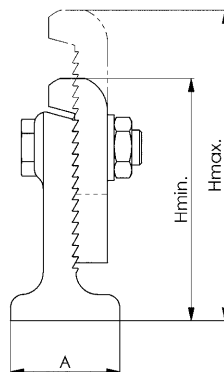


## No. 6510

### Serrated heel block

(serrated jacks). Step increments: 5.2 mm. Malleable casting, varnished. Base mill finished.

Order no.	Size	H min.	H max.	A	B	Clamping force [kN]	Weight [g]
73379	2	111	147	50	50	40	1225
73387	3	155	223	60	60	60	2607
73395	4	220	340	80	80	90	6028



## DIN 6326

### Support blocks for continuous adjustment, combination

with spiral gearing. Tempering steel, varnished.

Order no.	Combination	H min.	H max.	Lower part	H1	Upper part	H2	Weight [g]
71969	AK	25	45	A	42	K	24	1050
71977	AG	45	65	A	42	G	44	1350
71985	BK	65	85	B	82	K	24	2500
71993	BG	85	105	B	82	G	44	2800
72009	CK	105	125	C	122	K	24	4000
72017	CG	125	145	C	122	G	44	4300
72025	AKG	25	65	A	42	K / G	24 / 44	1550
72033	BKG	65	105	B	82	K / G	24 / 44	3000
72041	CKG	105	145	C	122	K / G	24 / 44	4500

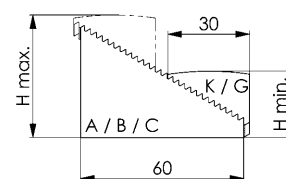
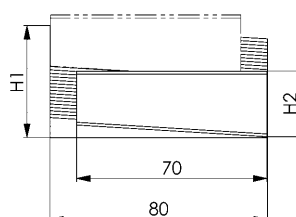


## DIN 6326

### Support blocks for continuous adjustment, single

with spiral gearing. Tempering steel, varnished.

Order no.	Single parts	H1	H2	Weight [g]
72090	A	42	-	850
72108	B	82	-	2300
72116	C	122	-	3800
72124	K	-	24	200
72132	G	-	44	500







- + Outstanding price-performance ratio
- + Drastically reduced tooling time
- + Immediate improvement of productivity
- + Repeat accuracy < 5um
- + Stainless steel
- + Form fit



ZERO-POINT SYSTEMS



CATALOGUE 2017/2018

Subject to technical alterations.