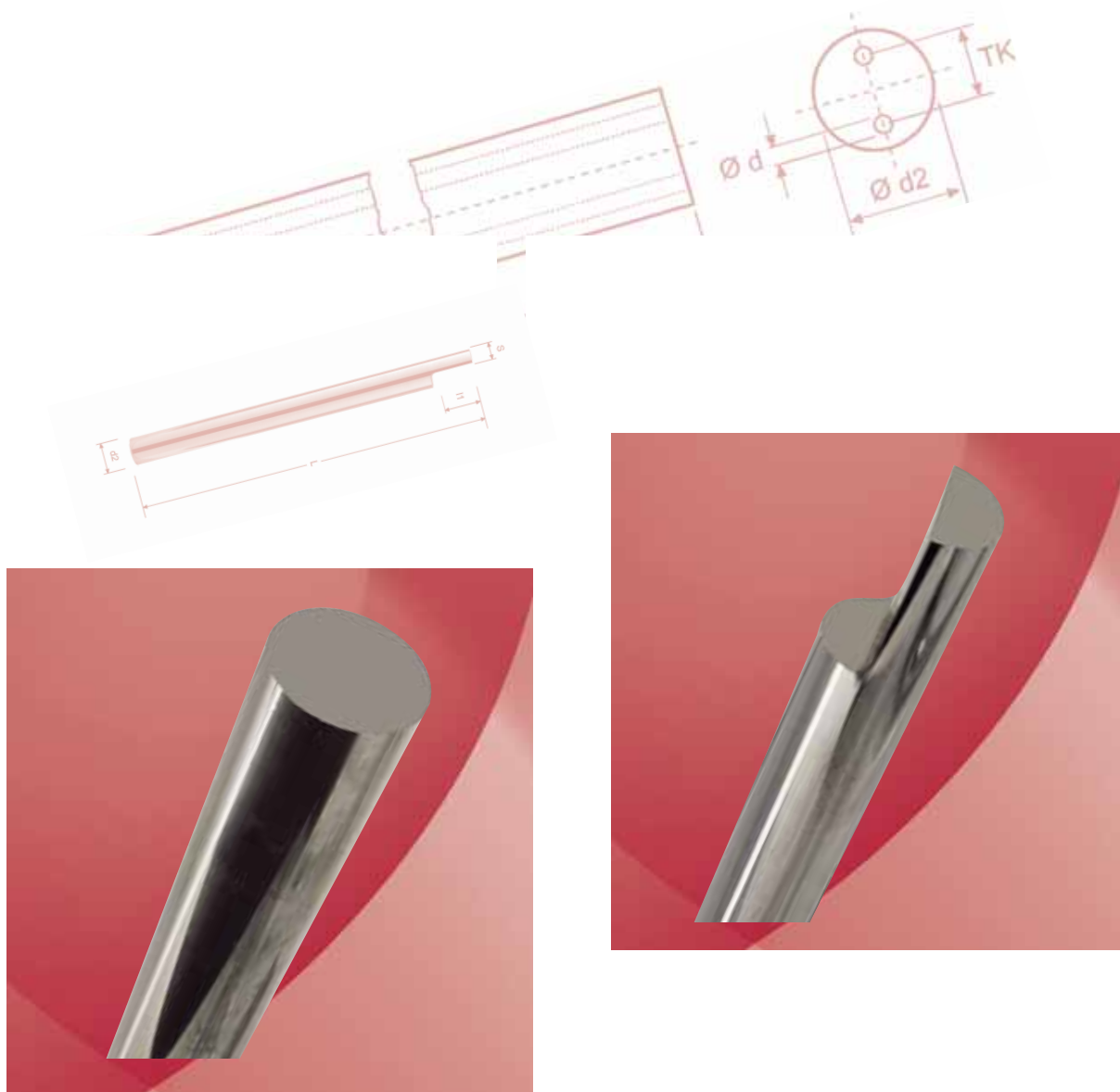


TK VALCOVÉ POLOTOVARY A GRAVÍROVACIE TYČKY

Rundstässe - Gravierstichel
Bareaux / Rond - Fraises à graver
Стержни твердосплавные, гравировальный инструмент
Válcová rycí tyč

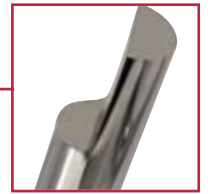


Bulino in metallo duro integrale

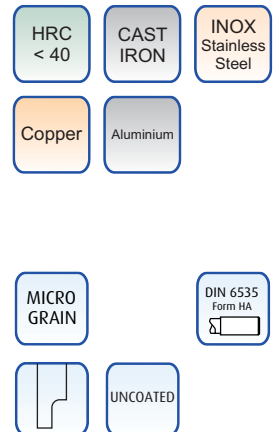
Solid carbide engraving tool

VHM - Gravierstichel - Fraise carbure à graver

Гравировальный инструмент твердосплавный - Sk polotovar roubík



CODE	d2h6 mm	l1 mm	L mm	S ^{+0,5} +0 mm
VBE020040	2	3.0	40	1
VBE020100	2	3.0	100	1
VBE030050	3	4.5	50	1.5
VBE030100	3	4.5	100	1.5
VBE040060	4	6.0	60	2
VBE040100	4	6.0	100	2
VBE050060	5	7.5	60	2.5
VBE050100	5	7.5	100	2.5
VBE060070	6	9.0	70	3
VBE060100	6	9.0	100	3
VBE060150	6	9.0	150	3
VBE080100	8	12.0	100	4
VBE080150	8	12.0	150	4
VBE100080	10	15.0	80	5
VBE100100	10	15.0	100	5
VBE100150	10	15.0	150	5
VBE120100	12	18.0	100	6
VBE120150	12	18.0	150	6
VBE140085	14	21.0	85	7
VBE140100	14	21.0	100	7
VBE140150	14	21.0	150	7
VBE140200	14	21.0	200	7
VBE160100	16	24.0	100	8
VBE160150	16	24.0	150	8
VBE160200	16	24.0	200	8
VBE180100	18	27.0	100	9
VBE180150	18	27.0	150	9
VBE180200	18	27.0	200	9
VBE200100	20	30.0	100	10
VBE200150	20	30.0	150	10
VBE200200	20	30.0	200	10

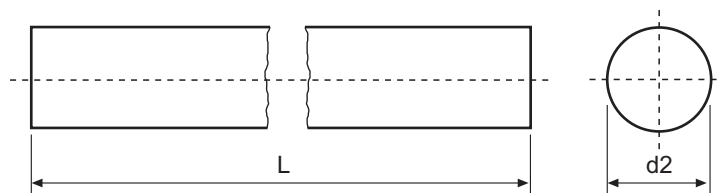


Cilindretto in metallo duro integrale

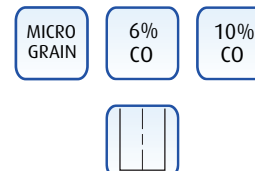
Solid carbide cylindrical rod

VHM - Rundstäbe - Barreaux carbure

Стержень твердосплавный цилиндрический - Sk válcová tyč



CODE UNGROUND (+0.3mm)	CODE GROUNDED (h6)	d2 mm	L mm	CODE UNGROUND (+0.3mm)	CODE GROUNDED (h6)	d2 mm	L mm
CGRE010x100	VCE010100	1	100	CGRE010x310	VCE010310	1.0	310
CGRE020x100	VCE020100	2	100	CGRE015x310	VCE015310	1.5	310
CGRE030x100	VCE030100	3	100	CGRE020x310	VCE020310	2.0	310
CGRE040x100	VCE040100	4	100	CGRE025x310	VCE025310	2.5	310
CGRE050x100	VCE050100	5	100	CGRE030x310	VCE030310	3.0	310
CGRE060x100	VCE060100	6	100	CGRE035x310	VCE035310	3.5	310
CGRE070x100	VCE070100	7	100	CGRE040x310	VCE040310	4.0	310
CGRE080x100	VCE080100	8	100	CGRE045x310	VCE045310	4.5	310
CGRE090x100	VCE090100	9	100	CGRE050x310	VCE050310	5.0	310
CGRE100x100	VCE100100	10	100	CGRE055x310	VCE055310	5.5	310
CGRE110x100	VCE110100	11	100	CGRE060x310	VCE060310	6.0	310
CGRE120x100	VCE120100	12	100	CGRE065x310	VCE065310	6.5	310
CGRE130x100	VCE130100	13	100	CGRE070x310	VCE070310	7.0	310
CGRE140x100	VCE140100	14	100	CGRE075x310	VCE075310	7.5	310
CGRE150x100	VCE150100	15	100	CGRE080x310	VCE080310	8.0	310
CGRE160x100	VCE160100	16	100	CGRE085x310	VCE085310	8.5	310
CGRE170x100	VCE170100	17	100	CGRE090x310	VCE090310	9.0	310
CGRE180x100	VCE180100	18	100	CGRE100x310	VCE100310	10.0	310
CGRE190x100	VCE190100	19	100	CGRE105x310	VCE105310	10.5	310
CGRE200x100	VCE200100	20	100	CGRE110x310	VCE110310	11.0	310
CGRE220x100	VCE220100	22	100	CGRE115x310	VCE115310	11.5	310
CGRE240x100	VCE240100	24	100	CGRE120x310	VCE120310	12.0	310
CGRE250x100	VCE250100	25	100	CGRE125x310	VCE125310	12.5	310
CGRE260x100	VCE260100	26	100	CGRE130x310	VCE130310	13.0	310
CGRE280x100	VCE280100	28	100	CGRE135x310	VCE135310	13.5	310
CGRE300x100	VCE300100	30	100	CGRE140x310	VCE140310	14.0	310
CGRE320x100	VCE320100	32	100	CGRE145x310	VCE145310	14.5	310
				CGRE150x310	VCE150310	15.0	310
				CGRE155x310	VCE155310	15.5	310
				CGRE160x310	VCE160310	16.0	310
				CGRE165x310	VCE165310	16.5	310
				CGRE170x310	VCE170310	17.0	310
				CGRE175x310	VCE175310	17.5	310
				CGRE180x310	VCE180310	18.0	310
				CGRE185x310	VCE185310	18.5	310
				CGRE190x310	VCE190310	19.0	310
				CGRE200x310	VCE200310	20.0	310
				CGRE220x310	VCE220310	22.0	310
				CGRE240x310	VCE240310	24.0	310
				CGRE250x310	VCE250310	25.0	310
				CGRE260x310	VCE260310	26.0	310
				CGRE280x310	VCE280310	28.0	310
				CGRE300x310	VCE300310	30.0	310
				CGRE320x310	VCE320310	32.0	310



MICRO
GRAIN

6%
CO

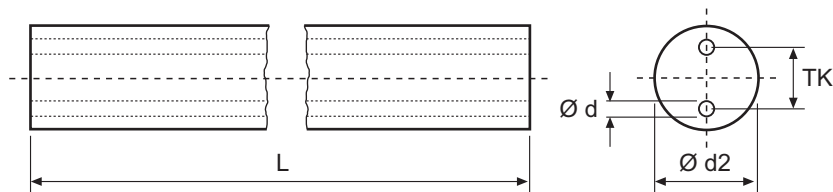
10%
CO

Cilindretto in metallo duro integrale con due fori paralleli

Solid carbide cylindrical rod with 2 parallel holes

VHM - Rundstäbe mit 2 Geraden Kühlkanälen - Barreaux carbure avec 2 trous d'huile droits

Стержень твердосплавный цилиндрический с подачей СОЖ - Sk válcová tyč se 2 paralelními otvory



CODE UNGROUND (+0.3mm)	CODE GROUND (h6)	d2 mm	L mm	TK mm	d mm
CG3FD2050330I2.0	VC3FD2050330I2.0	5	330	2.0	0.9
CG3FD2060330I1.1	VC3FD2060330I1.1	6	330	1.1	0.5
CG3FD2060330I1.7	VC3FD2060330I1.7	6	330	1.7	0.8
CG3FD2060330I2.0	VC3FD2060330I2.0	6	330	2.0	0.9
CG3FD2060330I2.3	VC3FD2060330I2.3	6	330	2.3	0.9
CG3FD2060330I2.4	VC3FD2060330I2.4	6	330	2.4	1.2
CG3FD2060330I3.0	VC3FD2060330I3.0	6	330	3.0	0.9
CG3FD2080330I1.7	VC3FD2080330I1.7	8	330	1.7	0.8
CG3FD2080330I2.0	VC3FD2080330I2.0	8	330	2.0	0.9
CG3FD2080330I2.6	VC3FD2080330I2.6	8	330	2.6	1.2
CG3FD2080330I3.0	VC3FD2080330I3.0	8	330	3.0	1.2
CG3FD2080330I3.5	VC3FD2080330I3.5	8	330	3.5	1.5
CG3FD2080330I4.0	VC3FD2080330I4.0	8	330	4.0	0.9
CG3FD2100330I2.6	VC3FD2100330I2.6	10	330	2.6	1.2
CG3FD2100330I3.5	VC3FD2100330I3.5	10	330	3.5	1.5
CG3FD2100330I4.0	VC3FD2100330I4.0	10	330	4.0	1.5
CG3FD2100330I5.0	VC3FD2100330I5.0	10	330	5.0	1.2
CG3FD2110330I3.5	VC3FD2110330I3.5	11	330	3.5	1.5
CG3FD2120330I3.5	VC3FD2120330I3.5	12	330	3.5	1.5
CG3FD2120330I4.0	VC3FD2120330I4.0	12	330	4.0	1.5
CG3FD2120330I5.0	VC3FD2120330I5.0	12	330	5.0	2.0
CG3FD2120330I6.2	VC3FD2120330I6.2	12	330	6.2	1.5
CG3FD2140330I2.6	VC3FD2140330I2.6	14	330	2.6	0.9
CG3FD2140330I3.5	VC3FD2140330I3.5	14	330	3.5	1.5
CG3FD2140330I5.0	VC3FD2140330I5.0	14	330	5.0	2.0
CG3FD2140330I7.0	VC3FD2140330I7.0	14	330	7.0	1.5
CG3FD2160330I3.5	VC3FD2160330I3.5	16	330	3.5	1.5
CG3FD2160330I5.0	VC3FD2160330I5.0	16	330	5.0	2.0
CG3FD2160330I6.2	VC3FD2160330I6.2	16	330	6.2	2.0
CG3FD2160330I8.0	VC3FD2160330I8.0	16	330	8.0	2.0
CG3FD2180330I5.0	VC3FD2180330I5.0	18	330	5.0	2.0
CG3FD2180330I6.2	VC3FD2180330I6.2	18	330	6.2	2.0
CG3FD2180330I7.0	VC3FD2180330I7.0	18	330	7.0	2.5
CG3FD2180330I9.0	VC3FD2180330I9.0	18	330	9.0	2.0
CG3FD2200330I3.5	VC3FD2200330I3.5	20	330	3.5	1.5
CG3FD2200330I6.2	VC3FD2200330I6.2	20	330	6.2	2.0
CG3FD2200330I7.0	VC3FD2200330I7.0	20	330	7.0	2.5
CG3FD2200330I100	VC3FD2200330I100	20	330	10.0	2.5
CG3FD2220330I7.0	VC3FD2220330I7.0	22	330	7.0	2.0
CG3FD2200330I110	VC3FD2220330I110	22	330	11.0	2.5
CG3FD2240330I6.2	VC3FD2240330I6.2	24	330	6.2	2.0
CG3FD2240330I7.0	VC3FD2240330I7.0	24	330	7.0	2.5
CG3FD2240330I120	VC3FD2240330I120	24	330	12.0	3.0
CG3FD2250330I8.0	VC3FD2250330I8.0	25	330	8.0	2.5
CG3FD2250330I120	VC3FD2250330I120	25	330	12.0	3.0
CG3FD2260330I120	VC3FD2260330I120	26	330	12.0	3.0
CG3FD2260330I130	VC3FD2260330I130	26	330	13.0	3.0
CG3FD2280330I100	VC3FD2280330I100	28	330	10.0	2.0
CG3FD2280330I130	VC3FD2280330I130	28	330	13.0	3.0
CG3FD2300330I130	VC3FD2300330I130	30	330	13.0	3.0
CG3FD2320330I130	VC3FD2320330I130	32	330	13.0	3.0

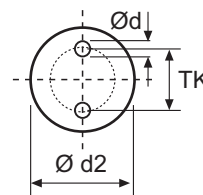
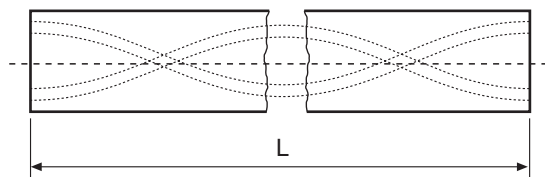


Cilindretto in metallo duro integrale con due fori elicoidali

Solid carbide rod with 2 twisted coolant holes

VHM - Rundstäbe mit 2 Verdrehten Kühlkanälen - Barreaux carbure avec 2 trous hélicoïdaux

Стержень твердосплавный цилиндрический с подачей СОЖ - Sk válcová tyč se 2 chladicími otvory ve spirále



CODE UNGROUND (+0.3mm)	CODE GROUND (h6)	d2 mm	L mm	TK mm	d mm	α°
CG3FE2030330I1.5	VC3FE2030330I1.5	3	330	1.5	0.4	30°
CG3FE2060330I1.9	VC3FE2060330I1.9	6	330	1.9	0.6	30°
CG3FE2060330I2.2	VC3FE2060330I2.2	6	330	2.2	0.8	30°
CG3FE2060330I2.6	VC3FE2060330I2.6	6	330	2.6	0.7	30°
CG3FE2080330I2.7	VC3FE2080330I2.7	8	330	2,7	0,7	30°
CG3FE2080330I3.5	VC3FE2080330I3.5	8	330	3,5	0,9	30°
CG3FE2080330I4.0	VC3FE2080330I4.0	8	330	4,0	1,0	30°
CG3FE2100330I2.7	VC3FE2100330I2.7	10	330	2,7	0,8	30°
CG3FE2100330I3.5	VC3FE2100330I3.5	10	330	3,5	0,8	30°
CG3FE2100330I4.8	VC3FE2100330I4.8	10	330	4.8	1.4	30°
CG3FE2120330I4.2	VC3FE2120330I4.2	12	330	4,2	0,9	30°
CG3FE2120330I5.4	VC3FE2120330I5.4	12	330	5.4	1.5	30°
CG3FE2120330I5.9	VC3FE2120330I5.9	12	330	5.9	1.7	30°
CG3FE2130330I6.5	VC3FE2130330I6.5	13	330	6.5	1.8	30°
CG3FE2140330I4.7	VC3FE2140330I4.7	14	330	4,7	1,0	30°
CG3FE2140330I7.1	VC3FE2140330I7.1	14	330	7.1	1.75	30°
CG3FE2140330I7.2	VC3FE2140330I7.2	14	330	7.1	2,0	30°
CG3FE2150330I7.7	VC3FE2150330I7.7	15	330	7.7	1.75	30°
CG3FE2160330I5.5	VC3FE2160330I5.5	16	330	5,5	1,2	30°
CG3FE2160330I8.3	VC3FE2160330I8.3	16	330	8.3	1.75	30°
CG3FE2160330I8.6	VC3FE2160330I8.6	16	330	8.6	2.5	30°
CG3FE2180330I9.5	VC3FE2180330I9.5	18	330	9.5	2,0	30°
CG3FE2180330I9.7	VC3FE2180330I9.7	18	330	9.7	2.8	30°
CG3FE2190330I101	VC3FE2190330I101	19	330	10.1	2.5	30°
CG3FE2200330I7.1	VC3FE2200330I7.1	20	330	7,1	1,5	30°
CG3FE2200330I104	VC3FE2200330I104	20	330	10.4	2.8	30°
CG3FE2200330I107	VC3FE2200330I107	20	330	10.7	3.2	30°

