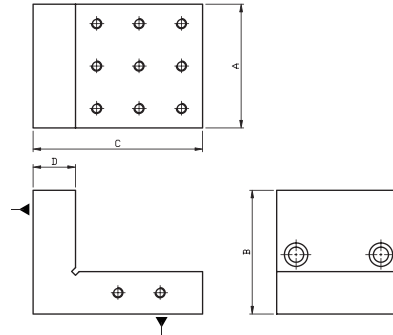


Precision Steel Angle Plate

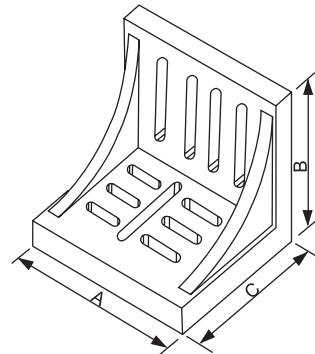
HIGH PRECISION TYPE



MATERIAL : YK30 ALLOY STEEL
 ACCURACY : 0.005/100MM
 HARDEN TREATMENT UP TO HRC 58°
 ※ Not for LAB

ORDER NO.	A	B	C	D	N.W (KGS)	CODE NO.
VRS-33	3" 75	3" 75	4" 100	1" 25	2.2	2006-060
VRS-44	4" 100	4" 100	4" 100	1" 25	3.7	2006-061
VRS-46	4" 100	4" 100	6" 150	1" 25	4.5	2006-062
VRS-85	8" 200	120	8" 200	40	14.3	2006-063
VRS-1206	12" 300	6" 150	12" 300	2" 50	32.3	2006-064

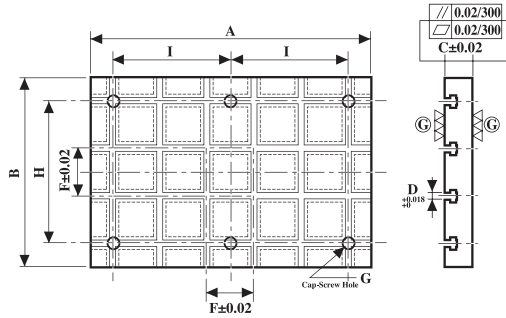
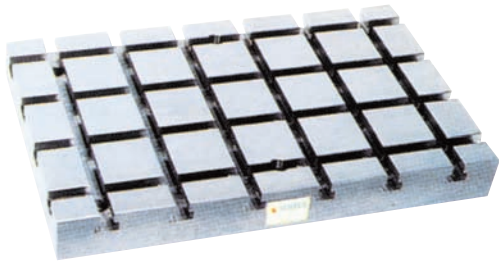
Right Angle Plate



- Made of high tensile cast iron
 - Webbed style accurately grounded, square and parallel on outside faces and ends within 0.01mm per 100mm
- Unit:mm

ORDER NO.	Approx Dimensions			WEIGHT (kgs)	CODE NO.
	A	B	C		
VR-6	150	126	115	3.8	1013-010
VR-8	202	150	126	7.4	1013-011
VR-10	250	202	126	12.1	1013-012
VR-12	300	228	202	23.7	1013-013

Base Plate Series

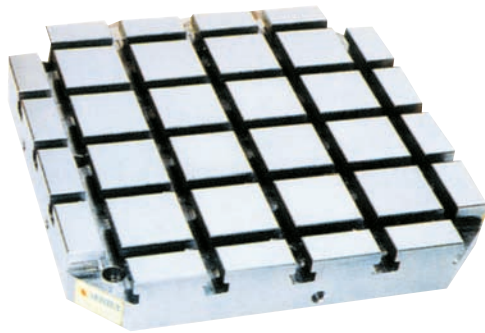


SUB TABLE T-SLOT TYPE

Sub-plates used on vertical machining centers and larger milling machines.

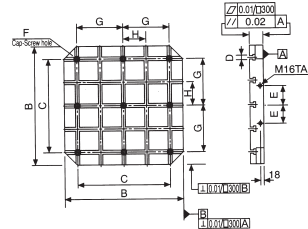
They protect the surface of machine table, and provide larger space for setting workpieces and minimize loss of operating time of expensive machine tools.

Material: Close grained cast iron, Annealed
Finish: Top and bottom ground



ORDER NO.	A	B	C(±0.02)	D	E	F(±0.02)	G	kg	CODE NO.
TBP-6040	600	400	60	14	50	100	Ø18	120	4006-001
TBP-6050	600	500	60	14	50	100	Ø18	150	4006-002
TBP-6060	600	600	60	14	50	100	Ø18	179	4006-003
TBP-8040	800	400	60	14	50	100	Ø18	160	4006-004
TBP-9045	900	450	60	14	50	100	Ø18	204	4006-005
TBP-10050	1000	500	60	14	50	100	Ø18	248	4006-006
TBP-6040D	600	400	75	18	50	100	Ø18	100	4006-007
TBP-6050D	600	500	75	18	50	100	Ø18	125	4006-008
TBP-6060D	600	600	75	18	50	100	Ø18	149	4006-009
TBP-8040D	800	400	75	18	50	100	Ø18	133	4006-010
TBP-9045D	900	450	75	18	50	100	Ø18	169	4006-011
TBP-10050D	1000	500	75	18	50	100	Ø18	207	4006-012

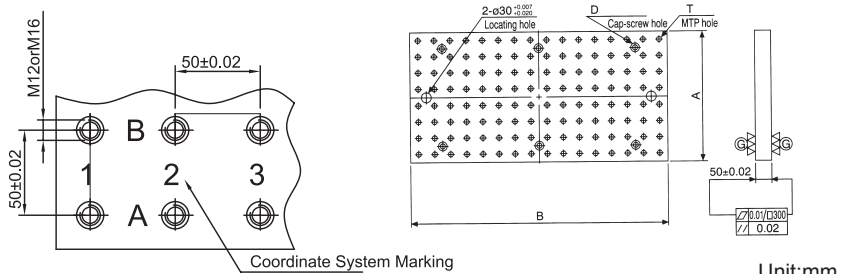
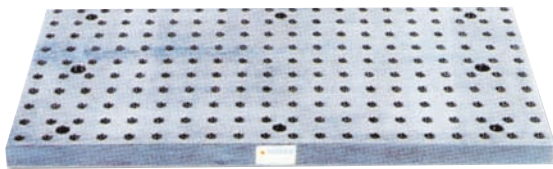
Special dimension's order welcome.



SQUARE TYPE

ORDER NO.	A(±0.02)	B	C	D(H7)	E	F	G(±0.02)	H(±0.02)	kg	CODE NO
SBP-4040	60	400	320	14	55	Ø18	160	80	56	4006-020
SBP-5050	60	500	400	14	75	Ø18	200	100	90	4006-021
SBP-6363	60	630	500	14	100	Ø18	250	125	149	4006-022
SBP-8080	60	800	640	14	135	Ø18	320	160	230	4006-023
SBP-4040A	75	400	320	18	55	Ø18	160	80	85	4006-024
SBP-5050A	75	500	400	18	75	Ø18	200	100	118	4006-025
SBP-6363A	75	630	500	18	100	Ø18	250	125	195	4006-026
SBP-8080A	75	800	640	18	135	Ø18	320	160	298	4006-027

Special dimension's order welcome.



SUB TABLE THERAD TYPE

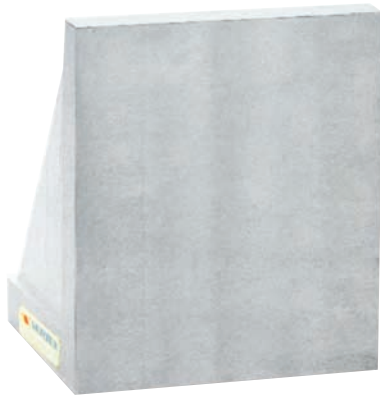
ORDER NO.	A	B	D	T		NO. OF MTP hole	KGS	CODE NO.
				(F7)	TAP			
HBP-4060	400	600	Ø18	Ø12	M12	96	90	4006-030
HBP-5060	500	600	Ø18	Ø12	M12	120	112	4006-031
HBP-6060	600	600	Ø18	Ø12	M12	144	134	4006-032
HBP-4080	400	800	Ø18	Ø12	M12	128	119	4006-033
HBP-4590	450	900	Ø18	Ø12	M12	162	151	4006-034
HBP-50100	500	1000	Ø18	Ø12	M12	200	187	4006-035
HBP-4060T	400	600	Ø18	Ø16	M16	96	87	4006-036
HBP-5060T	500	600	Ø18	Ø16	M16	120	108	4006-037
HBP-6060T	600	600	Ø18	Ø16	M16	144	129	4006-038
HBP-4080T	400	800	Ø18	Ø16	M16	128	115	4006-039
HBP-4590T	450	900	Ø18	Ø16	M16	162	146	4006-040
HBP-50100T	500	1000	Ø18	Ø16	M16	200	180	4006-041

Special dimension's order welcome.

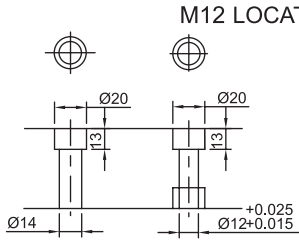


M/C Angle Plate 90°

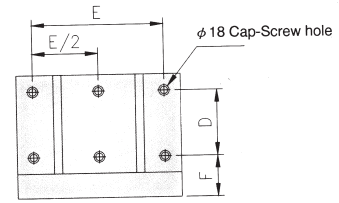
● COLOR MAY VARY



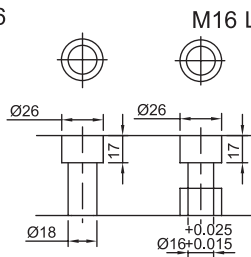
M12



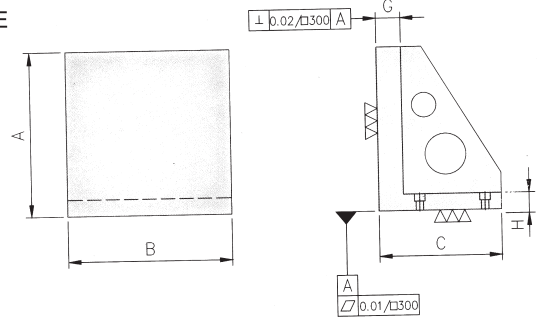
M12 LOCATION HOLE



M16



M16 LOCATION HOLE



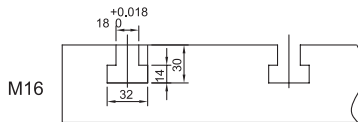
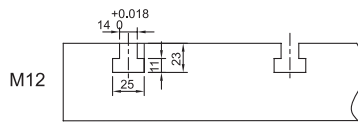
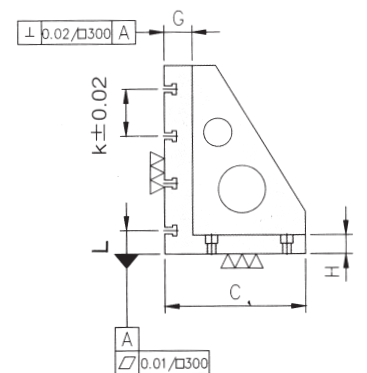
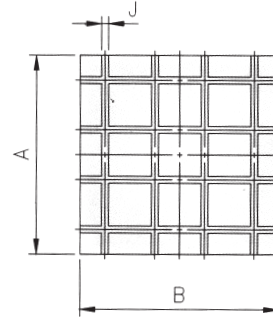
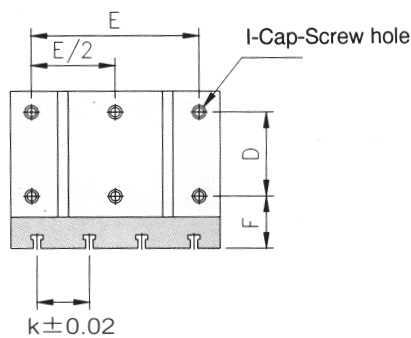
- Material/Finish:
Material:FC30(JIS)/GG30(DIN)
Heat treated (Normalized)
- Application:Good for horizontal M/C
- eye bolt included.

ORDER NO.	A	B	C	D	E	F	G	H	kgs	CODE NO.
BP20-30	300	300	220	100	250	90	40	30	52	4007-001
BP20-40	400	400	280	160	320	90	40	30	90	4007-002
BP20-50	500	500	350	200	400	90	50	35	175	4007-003
BP20-60	630	630	450	250	500	100	50	40	305	4007-004
BP20-80	800	800	550	302	640	115	50	45	480	4007-005



M/C Angle Plate 90°

T-SLOT TYPE



● COLOR MAY VARY

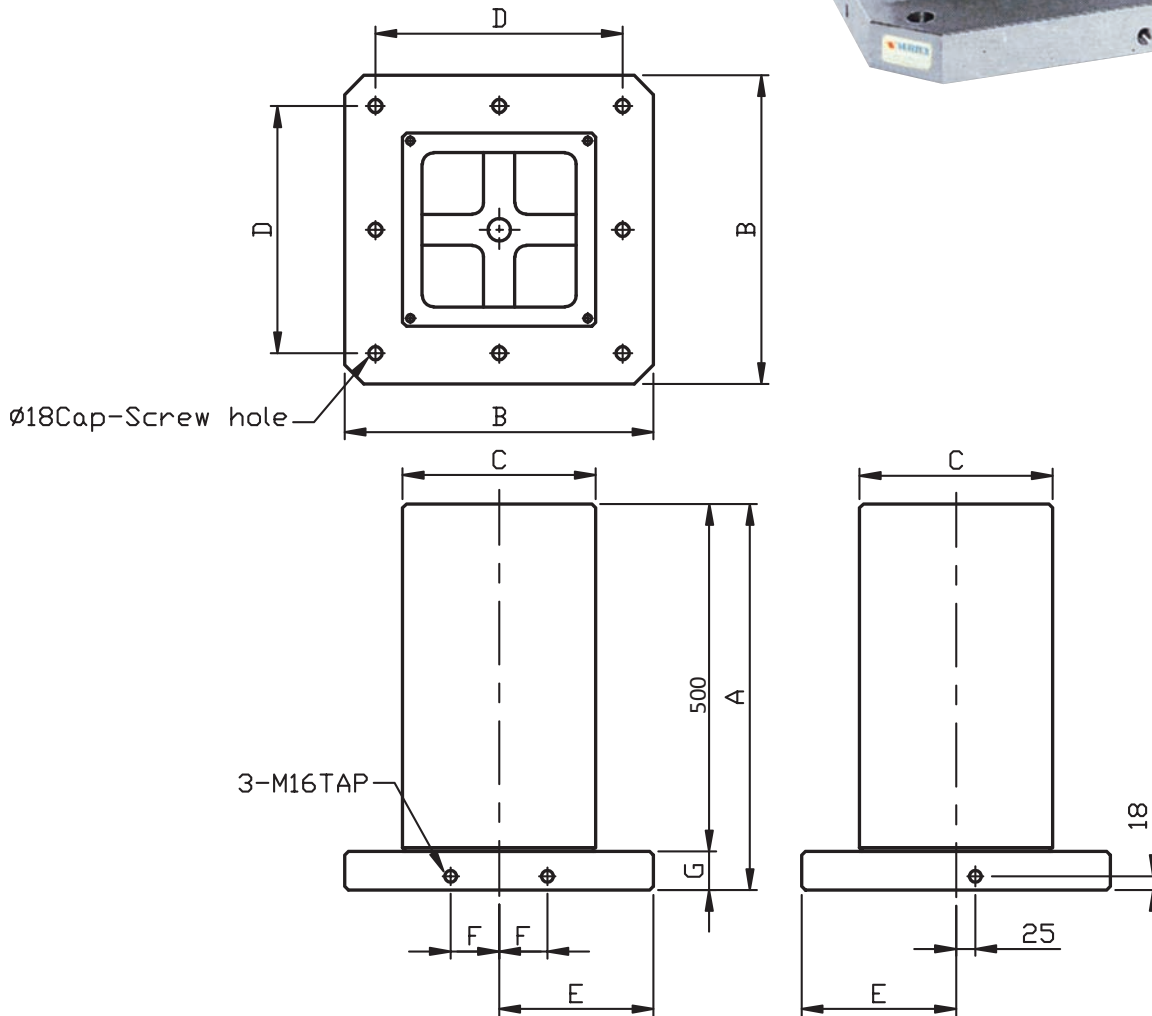
ORDER NO.	A	B	C	D	E	F	G	H	I	J	K (+0.02)	L	KGS	CODE NO.
BP22-30	300	300	220	100	250	90	60	30	Ø18	14	100	50	62.5	4007-010
BP22-40	400	400	280	160	320	90	60	30	Ø18	14	100	50	114.2	4007-011
BP22-50	500	500	350	200	400	90	60	35	Ø18	14	100	50	184	4007-012
BP22-60	630	630	450	250	500	100	60	40	Ø18	14	125	65	316	4007-013
BP22-80	800	800	550	320	640	115	75	45	Ø18	14	150	100	577	4007-014
BP22-830	300	300	220	100	250	90	60	30	Ø18	18	100	50	59.2	4007-015
BP22-840	400	400	300	160	320	90	60	30	Ø18	18	100	50	111.2	4007-016
BP22-850	500	500	350	200	400	90	60	35	Ø18	18	100	50	184	4007-017
BP22-860	630	630	450	250	500	100	65	40	Ø18	18	125	65	304	4007-018

M/C ANGLE PLATE



M/C Clamping Cube

- Material/Finish:
Material:FC30(JIS)/GG30(DIN)
Heat treated (Normalized)
- Application:Good for horizontal M/C
- Features:Free to finish an actual required hole pattern for your special jig.
- eye bolt included.
- COLOR MAY VARY



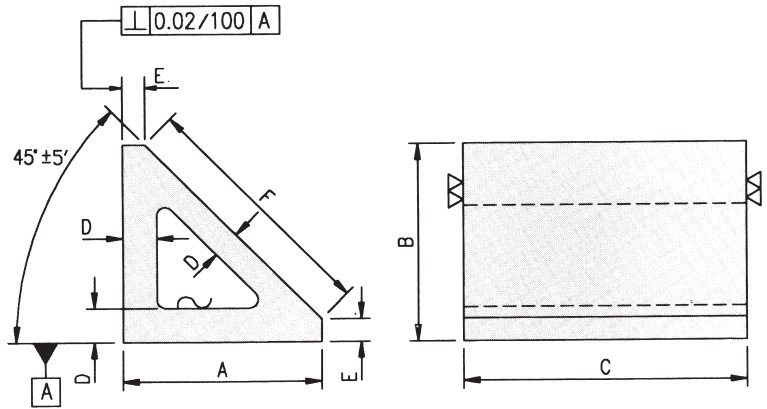
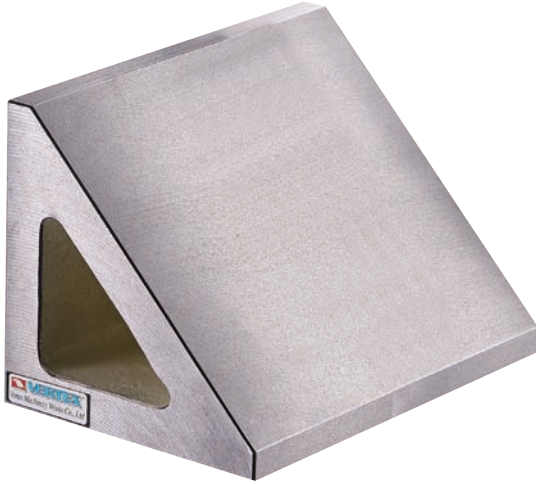
SPECIAL DESIGN WELCOM

ORDER NO.	A	B	C	D	E	F	G	NO.of Mounting holes	kg	CODE NO.
BP07-10	500	400	250	320	200	55	50	4	175	4007-020
BP07-20	600	500	300	400	250	75	50	8	240	4007-021
BP07-30	700	630	350	500	315	100	50	8	390	4007-022
BP07-40	800	800	500	640	400	135	50	8	745	4007-023



Angular Hollow Block 45°

● COLOR MAY VARY



Material: Cast Iron
FC-300
GG-30

ORDER NO.	A	B	C	D	E	F	kgs	CODE NO.
BC45-15	100	100	150	14	10	127	4.5	4007-030
BC45-30	100	100	300	14	10	127	8.8	4007-031
BC45-151	200	200	150	22	20	255	15.0	4007-032
BC45-301	200	200	300	22	20	255	29.0	4007-033

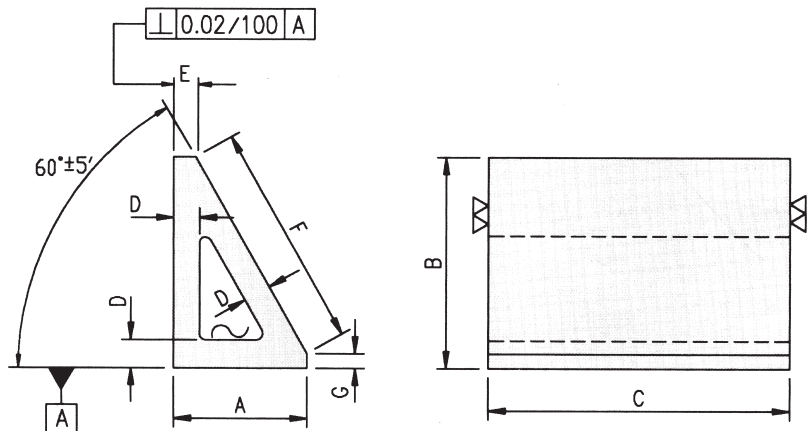
ANGULAR HOLLOW BLOCK



Angular Hollow Block 30°

● COLOR MAY VARY

T-SLOT TYPE

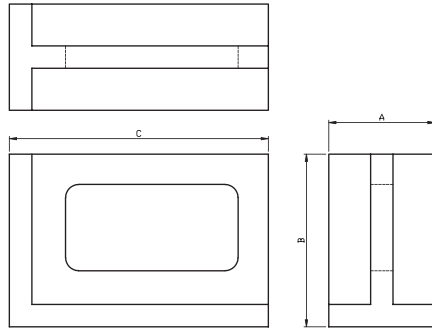


Material: Cast Iron
FC-300
GG-30

ORDER NO.	A	B	C	D	E	F	G	kgs	CODE NO.
BC30-15	63	100	150	12	9	108	6	3.0	4007-040
BC30-30	63	100	300	12	9	108	6	6.0	4007-041
BC30-151	125	200	150	20	14	222	8	9.5	4007-042
BC30-301	125	200	300	20	14	222	8	19.0	4007-043



Precision Right Angle Plate



- Made of finest quality castings, stress relieved.
- All outside surfaces closely finished for square and parallel references.
- Precision ground: Square within 0.01mm per 100mm
Parallel within 0.01mm per 100mm

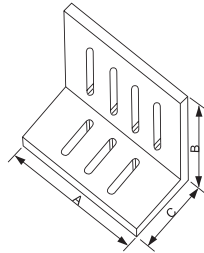
Unit:mm

ORDER NO.	Approx Dimensions			WEIGHT (kgs)	CODE NO.
	A	B	C		
VRH-4	102	126	150	6.3	1013-001
VRH-5	126	202	300	16.9	1013-002
VRH-6	150	150	202	14.5	1013-003
VRH-8	202	250	300	32.5	1013-004



Slotted Angle Plate

VR-45



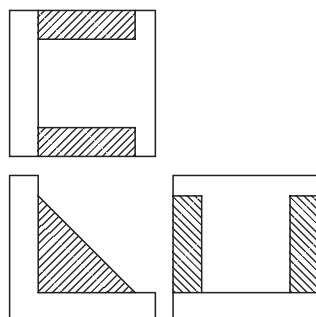
VR-100

- Many size also stocked with precision ground finish.
- Made of high tensile cast iron properly seasoned against distortion.
Open end style accurately machined square and parallel on all faces.

ORDER NO.	Approx Dimensions			APPROX WEIGHT (kgs)	CODE NO.
	A	B	C		
VR-45	4-1/2"	3-1/2"	3"	1.3	1013-020
VR-60	6"	5"	4-1/2"	3.2	1013-021
VR-80	8"	6"	5"	7.4	1013-022
VR-100	10"	8"	6"	12	1013-023
VR-120	12"	9"	8"	19.4	1013-024



Plain Angle Plate



Machined & precision ground

- Made from high tensile cast iron - normalized and stress relieved.
- Precision ground: Flat and square within 0.01 per 100mm

ORDER NO.	Size in inches	APPROX WEIGHT (kgs)	CODE NO.
VR-22	2x2x2	0.4	1013-030
VR-33	3x3x3	1.2	1013-031
VR-44	4x4x4	2.5	1013-032
VR-55	5x5x5	4.3	1013-033
VR-66	6x6x6	7	1013-034
VR-88	8x8x8	15.2	1013-035
VR-1010	10x10x10	27.7	1013-036
VR-1212	12x12x12	42.9	1013-037