



KALIBRY

KALIBRE SPRAWDZIANY

PANAS Tools s.r.o., 958 54
Hradište
info@panas.sk,
038/7496764-5 ,
www.panas.sk



2018

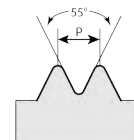
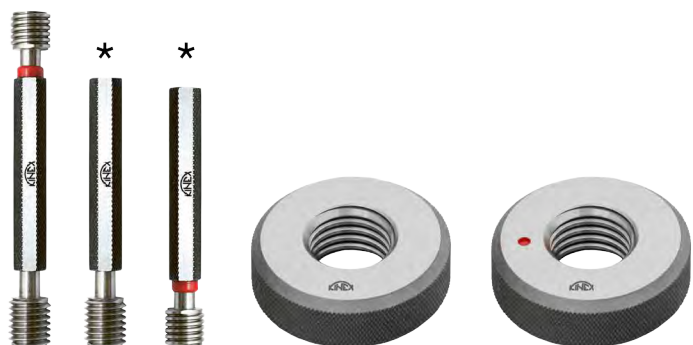


— **ICONIC LABO** —

Kalibry | Kalibre | Sprawdziany

WHITWORTHŮV ZÁVIT
WHITWORTHOV ZÁVIT
GWINT WHITWORTHA

BS
84



STANDARDNÍ STOUPÁNÍ
ŠTANDARDNÉ STÚPANIE
STANDARDOWY SKOK GWINTU



	d	P [mm]	code	code	code
BSW	1/8"	40	96401	97401D	97401Z
BSW	3/16"	24	96402	97402D	97402Z
BSW	1/4"	20	96403	97403D	97403Z
BSW	5/16"	18	96404	97404D	97404Z
BSW	3/8"	16	96405	97405D	97405Z
BSW	7/16"	14	96406	97406D	97406Z
BSW	1/2"	12	96407	97407D	97407Z
BSW	9/16"	12	96408	97408D	97408Z
BSW	5/8"	11	96409	97409D	97409Z
BSW	11/16"	11	96410	97410D	97410Z
BSW	3/4"	10	96411	97411D	97411Z
BSW	7/8"	9	96412	97412D	97412Z
BSW	1"	8	96413	97413D	97413Z
BSW	1 1/8"	7	96414	97414D	97414Z
BSW	1 1/4"	7	96415	97415D	97415Z
BSW	1 3/8"	6	96416	97416D	97416Z
BSW	1 1/2"	6	96417	97417D	97417Z
BSW	1 3/4"	5	96418 *	97418D	97418Z
BSW	2"	4 1/2	96419 *	97419D	97419Z
BSW	2 1/4"	4	96420 *	97420D	97420Z
BSW	2 1/2"	4	96421 *	97421D	97421Z
BSW	2 3/4"	3 1/2	96422 *	97422D	97422Z
BSW	3"	3 1/2	96423 *	97423D	97423Z
BSW	3 1/4"	3 1/4	96424 *	97424D	97424Z
BSW	3 1/2"	3 1/4	96425 *	97425D	97425Z
BSW	3 3/4"	3	96426 *	97426D	97426Z
BSW	4"	3	96427 *	97427D	97427Z
BSW	4 1/4"	2 7/8	96428 *	97428D	97428Z
BSW	4 1/2"	2 7/8	96429 *	97429D	97429Z
BSW	4 3/4"	2 3/4	96430 *	97430D	97430Z

- * dobrá i zmetková strana se samostatnou rukojetí
- * dobrá aj zmetková strana so samostatnou rukoväťou
- * przechodnia i nieprzechodnia część sprawdzianu z oddzielnym uchwytem

Kalibry | Kalibre | Sprawdziany

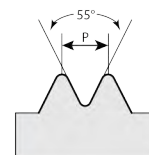
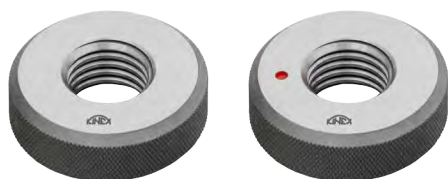
WHITWORTHŮV ZÁVIT
WHITWORTHOV ZÁVIT
GWINT WHITWORTHA

BS
84

	d	P [mm]	code	code	code
BSW	5"	2 3/4	96431 *	97431D	97431Z
BSW	5 1/4"	2 5/8	96432 *	97432D	97432Z
BSW	5 1/2"	2 5/8	96433 *	97433D	97433Z
BSW	5 3/4"	2 1/2	96434 *	97434D	97434Z
BSW	6"	2 1/2	96435 *	97435D	97435Z

WHITWORTHŮV ZÁVIT
WHITWORTHOV ZÁVIT
GWINT WHITWORTHA

BS
84



**NESTANDARDNÍ STOUPÁNÍ
NEŠTANDARDNÉ STÚPANIE
NIESTANDARDOWY SKOK GWINTU**

- * dobrá i zmetková strana se samostatnou rukojetí
- * dobrá aj zmetková strana so samostatnou rukovätou
- * przechodnia i nieprzechodnia część z oddzielnym uchwytem



	d	P [mm]	code	code	code
BSF	3/16"	32	96451	97451D	97451Z
BSF	7/32"	28	96452	97452D	97452Z
BSF	1/4"	26	96453	97453D	97453Z
BSF	9/32"	26	96454	97454D	97454Z
BSF	5/16"	22	96455	97455D	97455Z
BSF	3/8"	20	96456	97456D	97456Z
BSF	7/16"	18	96457	97457D	97457Z
BSF	1/2"	16	96458	97458D	97458Z
BSF	9/16"	16	96459	97459D	97459Z
BSF	5/8"	14	96460	97460D	97460Z
BSF	11/16"	14	96461	97461D	97461Z
BSF	3/4"	12	96462	97462D	97462Z
BSF	7/8"	11	96463	97463D	97463Z
BSF	1"	10	96464	97464D	97464Z
BSF	1 1/8"	9	96465	97465D	97465Z

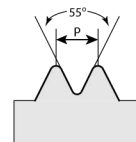
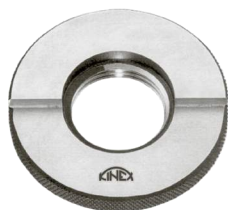
	d	P [mm]	code	code	code
BSF	1 1/4"	9	96466	97466D	97466Z
BSF	1 3/8"	8	96467	97467D	97467Z
BSF	1 1/2"	8	96468	97468D	97468Z
BSF	1 5/8"	8	96469 *	97469D	97469Z
BSF	1 3/4"	7	96470 *	97470D	97470Z
BSF	2"	7	96471 *	97471D	97471Z
BSF	2 1/4"	6	96472 *	97472D	97472Z
BSF	2 1/2"	6	96473 *	97473D	97473Z
BSF	2 3/4"	6	96474 *	97474D	97474Z
BSF	3"	5	96475 *	97475D	97475Z
BSF	3 1/4"	5	96476 *	97476D	97476Z
BSF	3 1/2"	5	96477 *	97477D	97477Z
BSF	3 3/4"	4 1/2	96478 *	97478D	97478Z
BSF	4"	4 1/2	96479 *	97479D	97479Z
BSF	4 1/4"	4	96480 *	97480D	97480Z

Kalibry | Kalibre | Sprawdziany

WHITWORTHŮV ZÁVIT TRUBKOVÝ KUŽELOVÝ
WHITWORTHOV ZÁVIT RÚRKOVÝ KUŽELOVÝ
GWINT WHITWORTHA RUROWY STOŻKOWY

DIN
2999

DIN EN
10226
/ISO 7



DIN
2999

DIN EN
10226/ISO 7

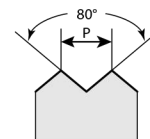


	d	P [mm]	code	code
R	1/16"	28	96501	97501
R	1/8"	28	96502	97502
R	1/4"	19	96503	97503
R	3/8"	19	96504	97504
R	1/2"	14	96505	97505
R	3/4"	14	96506	97506
R	1"	11	96507	97507
R	1 1/4"	11	96508	97508
R	1 1/2"	11	96509	97509
R	2"	11	96510	97510
R	2 1/2"	11	96511	97511
R	3"	11	96512	97512
R	4"	11	96513	97513
R	5"	11	96514	97514
R	6"	11	96515	97515

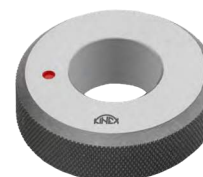
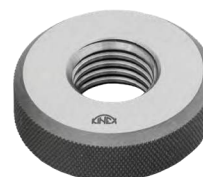
	d	P [mm]	code	code
R	1/16"	28	96551	97551
R	1/8"	28	96552	97552
R	1/4"	19	96553	97553
R	3/8"	19	96554	97554
R	1/2"	14	96555	97555
R	3/4"	14	96556	97556
R	1"	11	96557	97557
R	1 1/4"	11	96558	97558
R	1 1/2"	11	96559	97559
R	2"	11	96560	97560
R	2 1/2"	11	96561	97561
R	3"	11	96562	97562
R	4"	11	96563	97563
R	5"	11	96564	97564
R	6"	11	96565	97565

PANCÉŘOVÝ ZÁVIT
PANCIEROVÝ ZÁVIT
GWINT PANCERNY

DIN
40430



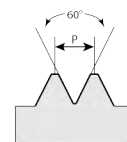
	d	P [mm]	code	code	code
Pg	7	20	96951	97951D	97951Z
Pg	9	18	96952	97952D	97952Z
Pg	11	18	96953	97953D	97953Z
Pg	13,5	18	96954	97954D	97954Z
Pg	16	18	96955	97955D	97955Z
Pg	21	16	96956	97956D	97956Z
Pg	29	16	96957	97957D	97957Z
Pg	36	16	96958	97958D	97958Z
Pg	42	16	96959	97959D	97959Z
Pg	48	16	96960	97960D	97960Z



Kalibry | Kalibre | Sprawdziany

PALCOVÝ UNIFIKOVANÝ ZÁVIT UNC
 PALCOVÝ UNIFIKOVANÝ ZÁVIT UNC
 CALOWY GWINT UNC

**ANSI
 B1.1**



**STANDARDNÍ STOUPÁNÍ
 ŠTANDARDNÉ STÚPANIE
 STANDARDOWY SKOK GWINTU**

	d	P/“	code	code	code
UNC	n. 1	64	96851	97851D	97851Z
UNC	n. 2	56	96852	97852D	97852Z
UNC	n. 3	48	96853	97853D	97853Z
UNC	n. 4	40	96854	97854D	97854Z
UNC	n. 5	40	96855	97855D	97855Z
UNC	n. 6	32	96856	97856D	97856Z
UNC	n. 8	32	96857	97857D	97857Z
UNC	n. 10	24	96858	97858D	97858Z
UNC	n. 12	24	96859	97859D	97859Z
UNC	1/4"	20	96860	97860D	97860Z
UNC	5/16"	18	96861	97861D	97861Z
UNC	3/8"	16	96862	97862D	97862Z
UNC	7/16"	14	96863	97863D	97863Z
UNC	1/2"	13	96864	97864D	97864Z
UNC	9/16"	12	96865	97865D	97865Z
UNC	5/8"	11	96866	97866D	97866Z
UNC	3/4"	10	96867	97867D	97867Z
UNC	7/8"	9	96868	97868D	97868Z
UNC	1"	8	96869	97869D	97869Z
UNC	1 1/8"	7	96870	97870D	97870Z
UNC	1 1/4"	7	96871	97871D	97871Z
UNC	1 3/8"	6	96872	97872D	97872Z
UNC	1 1/2"	6	96873	97873D	97873Z
UNC	1 3/4"	5	96874 *	97874D	97874Z
UNC	2"	4 1/2	96875 *	97875D	97875Z
UNC	2 1/4"	4 1/2	96876 *	97876D	97876Z
UNC	2 1/2"	4	96877 *	97877D	97877Z
UNC	2 3/4"	4	96878 *	97878D	97878Z
UNC	3"	4	96879 *	97879D	97879Z
UNC	3 1/4"	4	96880 *	97880D	97880Z
UNC	3 1/2"	4	96881 *	97881D	97881Z
UNC	3 3/4"	4	96882 *	97882D	97882Z
UNC	4"	4	96883 *	97883D	97883Z

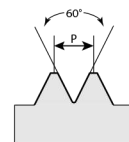
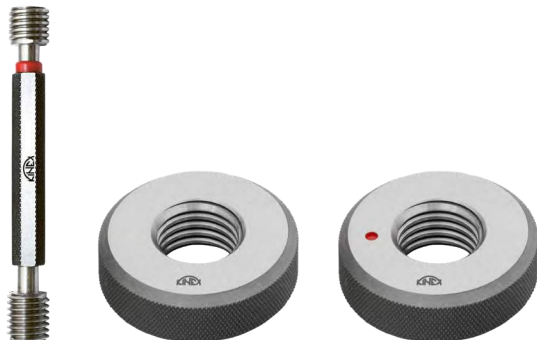


- * dobrá i zmetková strana se samostatnou rukojetí
- * dobrá aj zmetková strana so samostatnou rukoväťou
- * przechodnia i nieprzechodnia część sprawdzianu z oddzielnym uchwytem

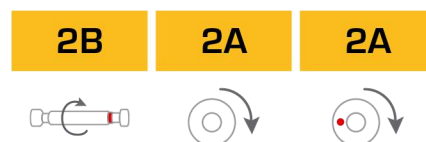
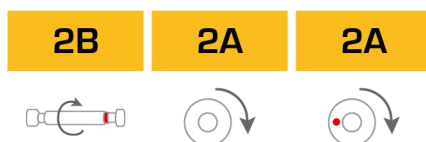
Kalibry | Kalibre | Sprawdziany

PALCOVÝ UNIFIKOVANÝ ZÁVIT UNF
 PALCOVÝ UNIFIKOVANÝ ZÁVIT UNF
 CALOWY GWINT UNF

**ANSI
 B1.1**



**NESTANDARDNÍ STOUPÁNÍ
 NEŠTANDARDNÉ STÚPANIE
 NIESTANDARDOWY SKOK GWINTU**

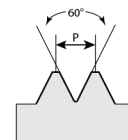


	d	P/"	code	code	code		d	P/"	code	code	code
UNF	n. 0	80	96901	97901D	97901Z	UNF	3/8"	24	96913	97913D	97913Z
UNF	n. 1	72	96902	97902D	97902Z	UNF	7/16"	20	96914	97914D	97914Z
UNF	n. 2	64	96903	97903D	97903Z	UNF	1/2"	20	96915	97915D	97915Z
UNF	n. 3	56	96904	97904D	97904Z	UNF	9/16"	18	96916	97916D	97916Z
UNF	n. 4	48	96905	97905D	97905Z	UNF	5/8"	18	96917	97917D	97917Z
UNF	n. 5	44	96906	97906D	97906Z	UNF	3/4"	16	96918	97918D	97918Z
UNF	n. 6	40	96907	97907D	97907Z	UNF	7/8"	14	96919	97919D	97919Z
UNF	n. 8	36	96908	97908D	97908Z	UNF	1"	12	96920	97920D	97920Z
UNF	n. 10	32	96909	97909D	97909Z	UNF	1 1/8"	12	96921	97921D	97921Z
UNF	n. 12	28	96910	97910D	97910Z	UNF	1 1/4"	12	96922	97922D	97922Z
UNF	1/4"	28	96911	97911D	97911Z	UNF	1 3/8"	12	96923	97923D	97923Z
UNF	5/16"	24	96912	97912D	97912Z	UNF	1 1/2"	12	96924	97924D	97924Z

Kalibry | Kalibre | Sprawdziany

PALCOVÝ UNIFIKOVANÝ ZÁVIT UNEF
 PALCOVÝ UNIFIKOVANÝ ZÁVIT UNEF
 CALOWY GWINT UNEF

**ANSI
 B1.1**



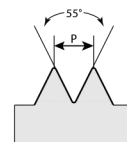
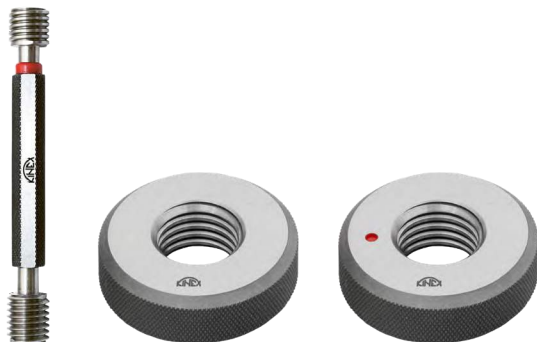
**NESTANDARDNÍ STOUPÁNÍ
 NEŠTANDARDNÉ STÚPANIE
 NIESTANDARDOWY SKOK GWINTU**

		2B	2A	2A
d	P/"	code	code	code
UNEF n. 12	32	96751	97751D	97751Z
UNEF 1/4"	32	96752	97752D	97752Z
UNEF 5/16"	32	96753	97753D	97753Z
UNEF 3/8"	32	96754	97754D	97754Z
UNEF 7/16"	28	96755	97755D	97755Z
UNEF 1/2"	28	96756	97756D	97756Z
UNEF 9/16"	24	96757	97757D	97757Z
UNEF 5/8"	24	96758	97758D	97758Z
UNEF 11/16"	24	96759	97759D	97759Z
UNEF 3/4"	20	96760	97760D	97760Z
UNEF 13/16"	20	96761	97761D	97761Z
UNEF 7/8"	20	96762	97762D	97762Z
UNEF 15/16"	20	96763	97763D	97763Z
UNEF 1"	20	96764	97764D	97764Z
UNEF 1 1/16"	18	96765	97765D	97765Z
UNEF 1 1/8"	18	96766	97766D	97766Z
UNEF 1 3/16"	18	96767	97767D	97767Z
UNEF 1 1/4"	18	96768	97768D	97768Z
UNEF 1 5/16"	18	96769	97769D	97769Z
UNEF 1 3/8"	18	96770	97770D	97770Z
UNEF 1 7/16"	18	96771	97771D	97771Z
UNEF 1 1/2"	18	96772	97772D	97772Z
UNEF 1 9/16"	18	96773	97773D	97773Z
UNEF 1 5/8"	18	96774	97774D	97774Z
UNEF 1 11/16"	18	96775	97775D	97775Z

Kalibry | Kalibre | Sprawdziany

UNIFIKOVANÝ PALCOVÝ ZÁVIT UNS/UN
UNIFIKOVANÝ PALCOVÝ ZÁVIT UNS / UN
GWINT CALOWY UNS / UN

ANSI
B1.2



NESTANDARDNÍ STOUPÁNÍ
NEŠTANDARDNÉ STÚPANIE
NIESTANDARDOWY SKOK GWINTU

2B

2A

2A



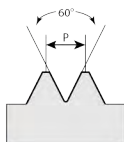
	d	P/"	code	code	code
UNS	1/4"	36	96701	97701D	97701Z
UN	1"	32	96702	97702D	97702Z
UN	11/16"	16	96703	97703D	97703Z
UN	13/16"	16	96704	97704D	97704Z
UN	7/8"	16	96705	97705D	97705Z
UN	1"	14	96706	97706D	97706Z
UN	1 1/16"	12	96707	97707D	97707Z
UN	1 3/16"	12	96708	97708D	97708Z
UN	1 5/16"	12	96709	97709D	97709Z
UN	1 5/8"	12	96710	97710D	97710Z
UN	1 3/4"	12	96711	97711D	97711Z
UN	1 7/8"	12	96712	97712D	97712Z
UN	2"	12	96713	97713D	97713Z
UN	1 1/8"	8	96714	97714D	97714Z
UN	1 1/4"	8	96715	97715D	97715Z
UN	1 3/8"	8	96716	97716D	97716Z
UN	1 1/2"	8	96717	97717D	97717Z
UN	1 5/8"	8	96718	97718D	97718Z
UN	1 3/4"	8	96719	97719D	97719Z
UN	2"	8	96720	97720D	97720Z

Kalibry | Kalibre | Sprawdziany

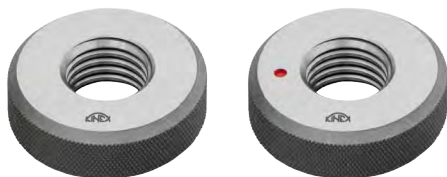
UNIFIKOVANÝ PALCOVÝ ZÁVIT UNJC
UNIFIKOVANÝ PALCOVÝ ZÁVIT UNJC
GWINT CALOWY UNJC

**ANSI
B1.2**

UNJC



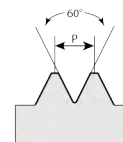
NESTANDARDNÍ STROUPÁNÍ
NEŠTANDARDNÉ STÚPANIE
NIESTANDARDOWY SKOK GWINTU



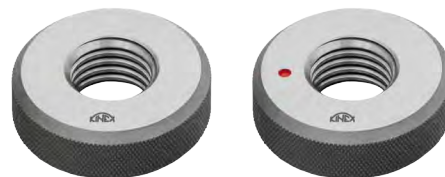
UNIFIKOVANÝ PALCOVÝ ZÁVIT UNJF
UNIFIKOVANÝ PALCOVÝ ZÁVIT UNJF
GWINT CALOWY UNJF

**ANSI
B1.2**

UNJF



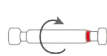
NESTANDARDNÍ STROUPÁNÍ
NEŠTANDARDNÉ STÚPANIE
NIESTANDARDOWY SKOK GWINTU



3B

3A

3A

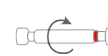


	d	P/“	code	code	code
UNJC	n. 2	56	96801	97801D	97801Z
UNJC	n. 4	40	96802	97802D	97802Z
UNJC	n. 6	32	96803	97803D	97803Z
UNJC	n. 8	32	96804	97804D	97804Z
UNJC	n. 10	24	96805	97805D	97805Z
UNJC	1/4"	20	96806	97806D	97806Z
UNJC	5/16"	18	96807	97807D	97807Z
UNJC	3/8"	16	96808	97808D	97808Z
UNJC	7/16"	14	96809	97809D	97809Z

3B

3A

3A



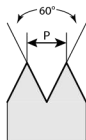
	d	P/“	code	code	code
UNJF	n. 4	48	96821	97821D	97821Z
UNJF	n. 6	40	96822	97822D	97822Z
UNJF	n. 8	36	96823	97823D	97823Z
UNJF	n. 10	32	96824	97824D	97824Z
UNJF	n. 12	28	96825	97825D	97825Z
UNJF	1/4"	28	96826	97826D	97826Z
UNJF	5/16"	24	96827	97827D	97827Z
UNJF	3/8"	24	96828	97828D	97828Z
UNJF	7/16"	20	96829	97829D	97829Z
UNJF	1/2"	20	96830	97830D	97830Z
UNJF	9/16"	18	96831	97831D	97831Z
UNJF	5/8"	18	96832	97832D	97832Z
UNJF	3/4"	16	96833	97833D	97833Z
UNJF	7/8"	14	96834	97834D	97834Z
UNJF	1"	12	96835	97835D	97835Z

Kalibry | Kalibre | Sprawdziany

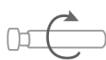
TRUBKOVÝ ZÁVIT KUŽELOVÝ NPT
RŮRKOVÝ ZÁVIT KUŽELOVÝ NPT
GWINT RUROWY STOŻKOWY NPT

ANSI
B1.20.1

NPT



STANDARDNÍ STOUPÁNÍ
ŠTANDARDNÉ STÚPANIE
STANDARDOWY SKOK GWINTU

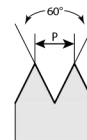


	d	P/“	code	code
NPT	1/16"	27	96651	97651
NPT	1/8"	27	96652	97652
NPT	1/4"	18	96653	97653
NPT	3/8"	18	96654	97654
NPT	1/2"	14	96655	97655
NPT	3/4"	14	96656	97656
NPT	1"	11 1/2	96657	97657
NPT	1 1/4"	11 1/2	96658	97658
NPT	1 1/2"	11 1/2	96659	97659
NPT	2"	11 1/2	96660	97660
NPT	2 1/2"	8	96661	97661
NPT	3"	8	96662	97662
NPT	3 1/2"	8	96663	97663
NPT	4"	8	96664	97664

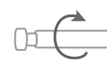
TRUBKOVÝ ZÁVIT KUŽELOVÝ NPTF
RŮRKOVÝ ZÁVIT KUŽELOVÝ NPTF
GWINT RUROWY STOŻKOWY NPTF

ANSI
B1.20.3

NPTF



NESTANDARDNÍ STOUPÁNÍ
NEŠTANDARDNÉ STÚPANIE
NIESTANDARDOWY SKOK GWINTU



	d	P/“	code	code
NPTF	1/16"	27	96681	97681
NPTF	1/8"	27	96682	97682
NPTF	1/4"	18	96683	97683
NPTF	3/8"	18	96684	97684
NPTF	1/2"	14	96685	97685
NPTF	3/4"	14	96686	97686
NPTF	1"	11 1/2	96687	97687
NPTF	1 1/4"	11 1/2	96688	97688
NPTF	1 1/2"	11 1/2	96689	97689
NPTF	2"	11 1/2	96690	97690
NPTF	2 1/2"	8	96691	97691
NPTF	3"	8	96692	97692

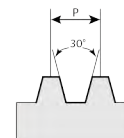
Kalibry | Kalibre | Sprawdziany

LICHOBEŽNÍKOVÝ ROVNORAMENNÝ ZÁVIT (TRAPÉZOVÝ)
 LICHOBĚŽNÍKOVÝ ROVNORAMENNÝ ZÁVIT (TRAPÉZOVÝ)
 TRAPEZOWY RÓWNORAMIENNY GWINT (TRAPEZOWY)

DIN
103



Tr



7H **7e** **7e**



	d	P [mm]	code	code	code
Tr	8	1,5	96308	97308D	97308Z
Tr	10	2	96310	97310D	97310Z
Tr	11	2	96311	97311D	97311Z
Tr	12	3	96312	97312D	97312Z
Tr	14	3	96314	97314D	97314Z
Tr	16	4	96316	97316D	97316Z
Tr	18	4	96318	97318D	97318Z
Tr	20	4	96320	97320D	97320Z
Tr	22	5	96322	97322D	97322Z
Tr	24	5	96324	97324D	97324Z
Tr	26	5	96326	97326D	97326Z
Tr	28	5	96328	97328D	97328Z
Tr	30	6	96330	97330D	97330Z

7H **7e** **7e**



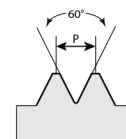
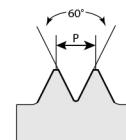
	d	P [mm]	code	code	code
Tr	32	6	96332	97332D	97332Z
Tr	34	6	96334	97334D	97334Z
Tr	36	6	96336	97336D	97336Z
Tr	38	7	96338	97338D	97338Z
Tr	40	7	96340	97340D	97340Z
Tr	42	7	96342 *	97342D	97342Z
Tr	44	7	96344 *	97344D	97344Z
Tr	46	8	96346 *	97346D	97346Z
Tr	48	8	96348 *	97348D	97348Z
Tr	50	8	96350 *	97350D	97350Z
Tr	52	8	96352 *	97352D	97352Z
Tr	55	9	96355 *	97355D	97355Z
Tr	60	9	96360 *	97360D	97360Z

- * dobrá i zmetková strana se samostatnou rukojetí
- * dobrá aj zmetková strana so samostatnou rukovätou
- * przechodnia i nieprzechodnia część z oddzielnym uchwytem

Kalibry | Kalibre | Sprawdziany

MEZNÍ ZÁVITOVÝ TRN PRO OPRAVU ZÁVITŮ
 MEDZNY ZÁVITOVÝ TRŇ PRE OPRAVU ZÁVITOV
 SPRAWDZIAN GRANICZNY DO NAPRAWY GWINTÓW

DIN
8140-2



6H



2B



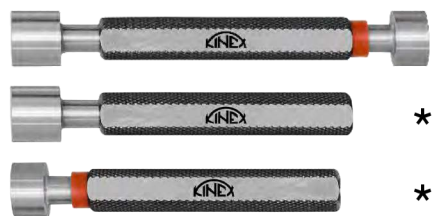
	d	P [mm]	code
EG M	2	0,4	93002EG
EG M	2,5	0,45	93002,5EG
EG M	3	0,5	93003EG
EG M	4	0,7	93004EG
EG M	5	0,8	93005EG
EG M	6	1	93006EG
EG M	7	1	93007EG
EG M	8	1,25	93008EG
EG M	10	1,5	93010EG
EG M	12	1,75	93012EG
EG M	14	2	93014EG
EG M	16	2	93016EG
EG M	18	2,5	93018EG
EG M	20	2,5	93020EG
EG M	24	3	93024EG
EG M	8	1	93008x1EG
EG M	10	1	93010x1EG
EG M	10	1,25	93010x1,25EG
EG M	12	1,25	93012x1,25EG
EG M	12	1,5	93012x1,5EG
EG M	14	1,5	93014x1,5EG
EG M	16	1,5	93016x1,5EG
EG M	18	1,5	93018x1,5EG
EG M	20	1,5	93020x1,5EG
EG M	22	1,5	93022x1,5EG
EG M	24	1,5	93024x1,5EG

	d	P [mm]	code
EG UNC	n. 2	56	96852EG
EG UNC	n. 4	40	96854EG
EG UNC	n. 5	40	96855EG
EG UNC	n. 6	32	96856EG
EG UNC	n. 8	32	96857EG
EG UNC	n. 10	24	96858EG
EG UNC	n. 12	24	96859EG
EG UNC	1/4"	20	96860EG
EG UNC	5/16"	18	96861EG
EG UNC	3/8"	16	96862EG
EG UNC	1/2"	13	96864EG
EG UNC	5/8"	11	96866EG
EG UNF	n. 4	48	96905EG
EG UNF	n. 5	44	96906EG
EG UNF	n. 6	40	96907EG
EG UNF	n. 8	36	96908EG
EG UNF	n. 10	32	96909EG
EG UNF	n. 12	28	96910EG
EG UNF	1/4"	28	96911EG
EG UNF	5/16"	24	96912EG
EG UNF	3/8"	24	96913EG
EG UNF	7/16"	20	96914EG
EG UNF	1/2"	20	96915EG
EG UNF	9/16"	18	96916EG
EG UNF	5/8"	18	96917EG

Kalibry | Kalibre | Sprawdziany

MEZNÍ VÁLEČKOVÝ KALIBR
MEDZNY VALČEKOVÝ KALIBER
SPRAWDZIAN GRANICZNY TŁOCZKOWY

DIN
7164



*

*

H7

H8



d	code	code
0,5	92000,5H7	92000,5H8
0,6	92000,6H7	92000,6H8
0,7	92000,7H7	92000,7H8
0,8	92000,8H7	92000,8H8
0,9	92000,9H7	92000,9H8
1	92001H7	92001H8
1,2	92001,2H7	92001,2H8
1,5	92001,5H7	92001,5H8
1,8	92001,8H7	92001,8H8
2	92002H7	92002H8
2,2	92002,2H7	92002,2H8
2,5	92002,5H7	92002,5H8
2,8	92002,8H7	92002,8H8
3	92003H7	92003H8
3,5	92003,5H7	92003,5H8
4	92004H7	92004H8
4,5	92004,5H7	92004,5H8
5	92005H7	92005H8
5,5	92005,5H7	92005,5H8
6	92006H7	92006H8
7	92007H7	92007H8
8	92008H7	92008H8
9	92009H7	92009H8
10	92010H7	92010H8
11	92011H7	92011H8
12	92012H7	92012H8
13	92013H7	92013H8
14	92014H7	92014H8
15	92015H7	92015H8
16	92016H7	92016H8
17	92017H7	92017H8
18	92018H7	92018H8
19	92019H7	92019H8
20	92020H7	92020H8

H7

H8



d	code	code
21	92021H7	92021H8
22	92022H7	92022H8
23	92023H7	92023H8
24	92024H7	92024H8
25	92025H7	92025H8
26	92026H7	92026H8
27	92027H7	92027H8
28	92028H7	92028H8
29	92029H7	92029H8
30	92030H7	92030H8
31	92031H7	92031H8
32	92032H7	92032H8
33	92033H7	92033H8
34	92034H7	92034H8
35	92035H7	92035H8
36	92036H7	92036H8
37	92037H7	92037H8
38	92038H7	92038H8
39	92039H7	92039H8
40	92040H7	92040H8
41	92041H7	92041H8
42	92042H7	92042H8
43	92043H7	92043H8
44	92044H7	92044H8
45	92045H7	92045H8
46	92046H7	92046H8
47	92047H7	92047H8
48	92048H7	92048H8
49	92049H7	92049H8
50	92050H7	92050H8
51	92051H7	92051H8
52	92052H7	92052H8
53	92053H7	92053H8
54	92054H7	92054H8
55	92055H7	92055H8
56	92056H7	92056H8
57	92057H7	92057H8
58	92058H7	92058H8
59	92059H7	92059H8
60	92060H7	92060H8
61	92061H7	92061H8
62	92062H7	92062H8

H7

H8



d	code	code
63	92063H7	92063H8
64	92064H7	92064H8
65	92065H7	92065H8
66	92066H7	92066H8
67	92067H7	92067H8
68	92068H7	92068H8
69	92069H7	92069H8
70	92070H7	92070H8
71	92071H7	92071H8
72	92072H7	92072H8
73	92073H7	92073H8
74	92074H7	92074H8
75	92075H7	92075H8
76	92076H7	92076H8
77	92077H7	92077H8
78	92078H7	92078H8
79	92079H7	92079H8
80	92080H7	92080H8
82	92082H7	92082H8
85	92085H7	92085H8
88	92088H7	92088H8
90	92090H7	92090H8
92	92092H7	92092H8
95	92095H7	92095H8
98	92098H7	92098H8
100	92100H7	92100H8
105	92105H7 *	92105H8 *
110	92110H7 *	92110H8 *
115	92115H7 *	92115H8 *
120	92120H7 *	92120H8 *
125	92125H7 *	92125H8 *
130	92130H7 *	92130H8 *
135	92135H7 *	92135H8 *
140	92140H7 *	92140H8 *
145	92145H7 *	92145H8 *
150	92150H7 *	92150H8 *
155	92155H7 *	92155H8 *
160	92160H7 *	92160H8 *

* se samostatnou rukojetí
* so samostatnou rukoväťou
* z oddzielnym uchwytem

Kalibry | Kalibre | Sprawdziany

NASTAVOVACÍ KROUŽEK
 NASTAVOVACÍ KRÚŽOK
 SPRAWDZIAN PIERŚCIENIOWY

DIN
 2250-C



d	code	d	code
1	91001	27	91027
1,2	91001,2	28	91028
1,5	91001,5	29	91029
1,8	91001,8	30	91030
2	91002	31	91031
2,2	91002,2	32	91032
2,5	91002,5	33	91033
2,8	91002,8	34	91034
3	91003	35	91035
3,5	91003,5	36	91036
4	91004	37	91037
4,5	91004,5	38	91038
5	91005	39	91039
6	91006	40	91040
7	91007	41	91041
8	91008	42	91042
9	91009	43	91043
10	91010	44	91044
11	91011	45	91045
12	91012	46	91046
13	91013	47	91047
14	91014	48	91048
15	91015	49	91049
16	91016	50	91050
17	91017	51	91051
18	91018	52	91052
19	91019	53	91053
20	91020	54	91054
21	91021	55	91055
22	91022	56	91056
23	91023	57	91057
24	91024	58	91058
25	91025	59	91059
26	91026	60	91060

d	code
61	91061
62	91062
63	91063
64	91064
65	91065
66	91066
67	91067
68	91068
69	91069
70	91070
71	91071
72	91072
73	91073
74	91074
75	91075
76	91076
77	91077
78	91078
79	91079
80	91080
81	91081
82	91082
83	91083
84	91084
85	91085
86	91086
87	91087
88	91088
89	91089
90	91090
91	91091
92	91092
93	91093
94	91094
95	91095
96	91096
97	91097
98	91098
99	91099
100	91100
101	91101
102	91102
103	91103
104	91104

d	code
105	91105
106	91106
107	91107
108	91108
109	91109
110	91110
111	91111
112	91112
112,5	91112,5
113	91113
114	91114
115	91115
116	91116
117	91117
118	91118
119	91119
120	91120
121	91121
122	91122
123	91123
124	91124
125	91125
126	91126
127	91127
128	91128
129	91129
130	91130
131	91131
132	91132
133	91133
134	91134
135	91135
136	91136
137	91137
137,5	91137,5
138	91138
139	91139
140	91140
141	91141
142	91142
143	91143
144	91144
145	91145
146	91146

d	code
147	91147
148	91148
149	91149
150	91150
151	91151
152	91152
153	91153
154	91154
155	91155
156	91156
157	91157
158	91158
159	91159
160	91160
161	91161
162	91162
162,5	91162,5
163	91163
164	91164
165	91165
166	91166
167	91167
168	91168
169	91169
170	91170
171	91171
172	91172
173	91173
174	91174
175	91175
176	91176
177	91177
178	91178
179	91179
180	91180
181	91181
182	91182
183	91183
184	91184
185	91185
186	91186
187	91187
187,5	91187,5
188	91188

d	code
189	91189
190	91190
191	91191
192	91192
193	91193
194	91194
195	91195
196	91196
197	91197
198	91198
199	91199
200	91200
205	91205
210	91210
215	91215
220	91220
225	91225
230	91230
235	91235
240	91240
245	91245
250	91250
255	91255
260	91260
265	91265
270	91270
275	91275
280	91280
285	91285
290	91290
295	91295
300	91300

Sady | Sady | Zestawy

Sada mezních válečkových kalibrů
 Sada medzných valčekových kalibrov
 Zestaw mierników granicznych do gwintów metrycznych

DIN
7164



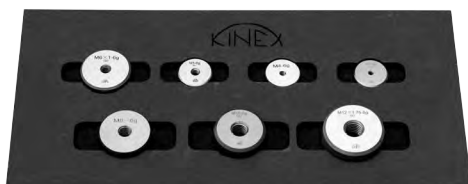
sada obsahuje:	92003H7	3H7
sada obsahuje:	92004H7	4H7
zestaw zawiera:	92005H7	5H7
	92006H7	6H7
	92008H7	8H7
	92010H7	10H7
	92012H7	12H7

CODE
92000-H7-012

Sada mezních závitových kroužků
 Sada medzných závitových krůžkov
 Zestaw mierników gwintowanych, pierścienie

DIN
13

CODE
94000-6g-012



sada obsahuje:	94003-6gD	M3
sada obsahuje:	94004-6gD	M4
zestaw zawiera:	94005-6gD	M5
	94006-6gD	M6
	94008-6gD	M8
	94010-6gD	M10
	94012-6gD	M12

Sada mezních závitových trňů
 Sada medzných závitových trňov
 Zestaw - Limity gwintu, szpilki gwintowane

DIN
13

CODE
93000-6H-012



sada obsahuje:	93003-6H	M3
sada obsahuje:	93004-6H	M4
zestaw zawiera:	93005-6H	M5
	93006-6H	M6
	93008-6H	M8
	93010-6H	M10
	93012-6H	M12

Piktogramy



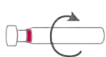
Typ závitů
Typ závitů
Typ gwintů



Vyrobeno dle německé národní normy
Vyrobené podľa nemeckej národnej normy
Wyprodukowane zgodnie z niemieckimi normami technicznymi



Mezní závitový trn - oboustranný (dobrá + zmetková strana)
Medzný závitový trn - oboustranný (dobrá + zmetková strana)
Sprawdzian graniczny - dwustronny (przechodnia + nieprzechodnia strona)



Mezní závitový trn - zmetkový
Medzný závitový trn - zmetkový
Sprawdzian graniczny - nieprzechodni



Mezní závitový trn - dobrý
Medzný závitový trn - dobrý
Sprawdzian graniczny - przechodni



Mezní závitový kružek - dobrý
Mezní závitový krúžok - dobrý
Sprawdzian pierścieniowy - przechodni



Mezní závitový trn - zmetkový
Medzný závitový krúžok - zmetkový
Sprawdzian pierścieniowy - nieprzechodni



Nastavovací kružek
Nastavovací krúžok
Sprawdzian pierścieniowy

Fotografie výrobků nemusí vždy odpovídat provedení výrobku z důvodu technické obměny sortimentu.

Tiskové chyby vyhrazeny.

Fotografie výrobkov nemusia vždy zodpovedať prevedeniu výrobku z dôvodu technickej obmeny sortimentu.

Tlačové chyby vyhradené.

Z powodu różnych wykonań poszczególnych narzędzi, ich wygląd nie zawsze odpowiada zdjęciom na naszych stronach i w sklepie internetowym.

Przepraszamy za błędy wynikłe w druku.



EVROPSKÁ UNIE
Evropský fond pro regionální rozvoj
Operační program Podnikání
a inovace pro konkurenceschopnost